

Dapagliflozin and New York Heart Association functional class in heart failure with mildly reduced or preserved ejection fraction: the DELIVER trial

John W. Ostrominski¹, Muthiah Vaduganathan¹, Brian L. Claggett¹, Rudolf A. de Boer², Akshay S. Desai¹, Dan Dobreanu³, Adrian F. Hernandez^{4,5}, Silvio E. Inzucchi⁶, Pardeep S. Jhund⁷, Mikhail Kosiborod⁸, Carolyn S.P. Lam^{2,9}, Anna M. Langkilde¹⁰, Daniel Lindholm¹⁰, Felipe A. Martinez¹¹, Eileen O'Meara¹², Magnus Petersson¹⁰, Sanjiv J. Shah¹³, Jorge Thierer¹⁴, John J.V. McMurray⁷, and Scott D. Solomon^{1,*}

¹Cardiovascular Division, Brigham and Women's Hospital, Harvard Medical School, Boston, MA, USA; ²Department of Cardiology, University Medical Center Groningen, University of Groningen, Groningen, The Netherlands; ³University of Medicine, Pharmacy, Science and Technology "G.E. Palade", Târgu Mures, Romania; ⁴Department of Medicine, Duke University, Durham, NC, USA; ⁵Duke Clinical Research Institute, Duke University, Durham, NC, USA; ⁶Section of Endocrinology, Yale University School of Medicine, New Haven, CT, USA; ⁷British Heart Foundation Cardiovascular Research Centre, University of Glasgow, Glasgow, UK; ⁸St Luke's Mid America Heart Institute, University of Missouri-Kansas City, Kansas City, MI, USA; ⁹National Heart Centre Singapore and Duke-National University of Singapore, Singapore, Singapore; ¹⁰Late Stage Development, Cardiovascular, Renal and Metabolism, BioPharmaceuticals R&D, Gothenburg, Sweden; ¹¹Universidad Nacional de Córdoba, Córdoba, Argentina; ¹²Institut de Cardiologie de Montréal, Université de Montréal, Montréal, Québec, Canada; ¹³Feinberg Cardiovascular Research Institute, Northwestern University Feinberg School of Medicine, Chicago, IL, USA; and ¹⁴Jefe de Unidad de Insuficiencia Cardíaca, Centro de Educación Médica e Investigaciones Clínicas Norberto Quirno (CEMIC), Buenos Aires, Argentina

Received 23 July 2022; revised 1 August 2022; accepted 6 August 2022

Aims

This pre-specified analysis of the DELIVER trial examined whether clinical benefits of dapagliflozin in heart failure (HF) with left ventricular ejection fraction (LVEF) >40% varied by baseline New York Heart Association (NYHA) class and examined the treatment effects on NYHA class over time.

Methods and results

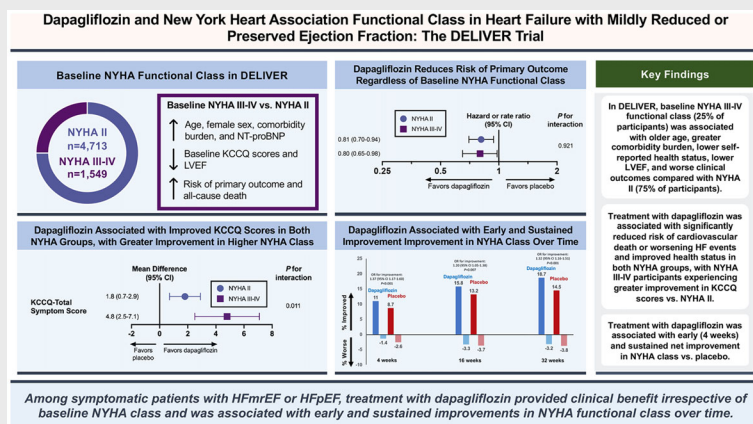
Treatment effects of dapagliflozin by baseline NYHA class II ($n = 4713$) versus III/IV ($n = 1549$) were examined on the primary endpoint (cardiovascular death or worsening HF event) and key secondary endpoints. Effects of dapagliflozin on change in NYHA class at 4, 16, and 32 weeks were also evaluated. Higher baseline NYHA class was associated with older age, female sex, greater comorbidity burden, lower LVEF, and higher natriuretic peptide levels. Participants with baseline NYHA class III/IV, as compared with II, were independently more likely to experience the primary endpoint (adjusted hazard ratio [HR] 1.16 [95% confidence interval, 1.02–1.33]) and all-cause death (adjusted HR 1.22 [1.06–1.40]). Dapagliflozin consistently reduced the risk of the primary endpoint compared with placebo, irrespective of baseline NYHA class (HR 0.81 [0.70–0.94] for NYHA class II vs. HR 0.80 [0.65–0.98] for NYHA class III/IV; $p_{\text{interaction}} = 0.921$). Participants with NYHA class III/IV had greater improvement in Kansas City Cardiomyopathy Questionnaire total symptom scores between baseline and 32 weeks (+4.8 [2.5–7.1]) versus NYHA class II (+1.8 [0.7–2.9]; $p_{\text{interaction}} = 0.011$). Dapagliflozin was associated with higher odds of any improvement in NYHA class (odds ratio [OR] 1.32 [1.16–1.51]), as well as improvement to NYHA class I (OR 1.43 [1.17–1.75]), versus placebo at 32 weeks, with benefits seen as early as 4 weeks.

*Corresponding author. Cardiovascular Medicine Brigham and Women's Hospital, Harvard Medical School, 75 Francis St, Boston, MA 02115, USA.
 Email: ssolomon@bwh.harvard.edu

Conclusions

Among symptomatic patients with HF and LVEF >40%, treatment with dapagliflozin provided clinical benefit irrespective of baseline NYHA class and was associated with early and sustained improvements in NYHA class over time.

Graphical Abstract



Summary of clinical profiles and treatment effects of dapagliflozin by baseline NYHA class, as well as the impact of dapagliflozin on changes in NYHA class over time in this prespecified analysis of the DELIVER trial. CI, confidence interval; DELIVER, Dapagliflozin Evaluation to Improve the Lives of Patients with Preserved Ejection Fraction; HF, Heart Failure; HFmrEF, heart failure with mildly reduced ejection fraction; HFpEF, heart failure with preserved ejection fraction; KCCQ, Kansas City Cardiomyopathy Questionnaire; LVEF, left ventricular ejection fraction; NT-proBNP, N-terminal pro-B-type natriuretic peptide; NYHA, New York Heart Association; OR, odds ratio.

Keywords

Dapagliflozin • Heart failure with preserved ejection fraction • Functional status • New York Heart Association classification

Introduction

Heart failure (HF) with mildly reduced (HFmrEF) or preserved ejection fraction (HFpEF) together constitute the majority of HF in the contemporary era and are associated with substantial death, disability, and healthcare costs.^{1–3} Identification of therapeutic pathways to ameliorate symptom burden and functional impairment remains a central priority in the clinical care of this at-risk population, for whom evidence-based therapeutic options have been historically lacking.⁴

Although with important limitations,^{5–8} the New York Heart Association (NYHA) functional classification is independently predictive of mortality irrespective of left ventricular ejection fraction (LVEF),^{9–11} is recommended in current international HF clinical practice guidelines to guide treatment eligibility,^{12,13} and therein remains an important clinical metric widely used in clinical practice to characterize symptom burden and functional capacity. Further, NYHA class represents a key inclusion criterion for enrolment in virtually all contemporary HF clinical trials.

Previous trials evaluating the role of sodium–glucose cotransporter 2 inhibitors (SGLT2i) in HF with reduced ejection fraction (HFrEF) have suggested relative treatment benefits may be

attenuated among patients with higher baseline NYHA class.^{14–16} Patients with HFpEF and HFmrEF with advanced NYHA class often exhibit a higher comorbidity burden that may be challenging to modify with HF-specific therapies,^{10,11} but it remains uncertain whether SGLT2i treatment effects exhibit similar heterogeneity by NYHA functional class at higher ejection fraction.

The DELIVER (Dapagliflozin Evaluation to Improve the Lives of Patients with Preserved Ejection Fraction Heart Failure) trial demonstrated an 18% improvement in cardiovascular death or worsening HF among patients with HF and LVEF >40%.¹⁷ In this pre-specified analysis, we aim to (i) evaluate the treatment response to dapagliflozin by baseline NYHA class, and (ii) determine the impact of dapagliflozin on changes in NYHA class over time.

Methods

Study design and patient population

The trial design, baseline characteristics, and primary results of DELIVER have been previously reported.^{18,19} In brief, DELIVER was an

international, multicentre, randomized, double-blind, parallel-group, event-driven trial comparing the efficacy and safety of dapagliflozin with placebo in patients with HF and mildly reduced, preserved, or improved LVEF. DELIVER enrolled patients aged ≥ 40 years with HF and an LVEF $>40\%$ (documented by echocardiography or cardiac magnetic resonance imaging within the 12 months preceding enrolment), NYHA functional class II–IV symptoms, elevated concentrations of N-terminal pro-B-type natriuretic peptide (NT-proBNP), and evidence of structural heart disease (increased left atrial size or left ventricular hypertrophy). Both ambulatory and hospitalized patients were eligible for enrolment. Key exclusion criteria included recent (within 4 weeks pre-enrolment) receipt or intolerance of an SGLT2i, type 1 diabetes, estimated glomerular filtration rate <25 ml/min/1.73 m², uncontrolled hypertension, body mass index >50 kg/m², the presence of an alternative diagnosis accounting for the patient's symptoms (e.g. anaemia), uncorrected primary valvular disease, and known infiltrative cardiomyopathy, myocarditis, or hypertrophic cardiomyopathy. The trial is registered with ClinicalTrials.gov (NCT03619213) and conforms with the principles outlined in the Declaration of Helsinki. The study protocol was approved by the institutional review board or ethics committee at each participating site and all participants provided written informed consent.

Assessment of New York Heart Association functional class

NYHA class was a pre-specified subgroup in DELIVER, and treatment effects of dapagliflozin versus placebo on NYHA class over time was an exploratory endpoint pre-specified in the study protocol. Baseline NYHA class was established by blinded clinicians at baseline, as well as at 4, 16, and 32 weeks following randomization.

Clinical outcomes in DELIVER

The primary endpoint of DELIVER was the composite of cardiovascular death or worsening HF event (inclusive of hospitalization for HF or an urgent HF visit requiring intravenous HF therapy). Secondary endpoints were cardiovascular death and total (first and recurrent) HF events, patient symptom burden as assessed by the Kansas City Cardiomyopathy Questionnaire total symptom score (KCCQ-TSS) at 32 weeks, cardiovascular death, and all-cause death. All clinical events were adjudicated by a blinded Clinical Endpoints Committee at Brigham & Women's Hospital (Boston, MA, USA) and University of Glasgow (Glasgow, UK).

Statistical analysis

Normally distributed data are reported as mean (\pm standard deviation), non-normally distributed data as median (interquartile range), and categorical variables as frequencies and percentages. Study participants were categorized into two groups: NYHA class II and III/IV. Differences in baseline characteristics of trial participants by NYHA class at enrolment were summarized for each group. The association between baseline NYHA class and clinical outcomes were adjusted for covariates determined a priori including age, sex, geographic region, recent HF hospitalization within 30 days, time from HF diagnosis at baseline, body mass index, history of atrial fibrillation or flutter, history of stroke, type 2 diabetes, chronic obstructive pulmonary disease, coronary artery disease, smoking status (current or former), LVEF, systolic blood pressure,

estimated glomerular filtration rate, and log-transformed NT-proBNP. Hazard ratios (HR) and 95% confidence intervals (CI) were calculated for time-to-first endpoints using Cox proportional hazard models, while rate ratios and 95% CI were calculated for recurrent event endpoints based on the Lin–Wei–Yang–Ying model.²⁰ Heterogeneity in treatment response to dapagliflozin on each of the primary and secondary endpoints was assessed by interaction testing. Treatment effects of dapagliflozin on NYHA functional class at each follow-up time point was evaluated. All available data at baseline, 4, 16, and 32 weeks were included, with no imputation for missing data. Change in NYHA functional class at 4, 16, and 32 weeks following randomization was classified ordinally as 'improved', 'no change', or 'worsened'. Only patients alive at each follow-up visit could be assessed for NYHA class; the proportion of participants with missing data for NYHA class at each follow-up timepoint is detailed in online supplementary Table S1. The effect of dapagliflozin was estimated using an ordinal logistic regression model and reported as an overall odds ratio (OR) for the likelihood of attaining better versus worse NYHA class. In a separate model, the treatment effect on the odds of achieving NYHA class I symptoms at 32 weeks was assessed. A responder analysis was performed to evaluate the proportion of participants with a deterioration or improvement in KCCQ score at 32 weeks following randomization, using a ≥ 5 point threshold for deterioration and ≥ 5 (at least 'small'), ≥ 10 (at least 'moderate'), and ≥ 15 point ('large') thresholds for improvement. *P*-values of <0.05 were considered statistically significant. Statistical analyses were performed using STATA version 17.0 (StataCorp, College Station, TX, USA).

Results

Overall, 6263 patients with HFmrEF or HFpEF were randomized across 350 sites and 20 countries in the DELIVER trial. A total of 4713 (75.3%) patients were classified as NYHA class II, while 1531 (24.4%) and 18 (0.3%) were NYHA class III and IV, respectively. One patient had NYHA class I symptoms at randomization and was excluded from this analysis.

Patient characteristics

Clinical profiles and medications of participants categorized by baseline NYHA functional class II versus III/IV are displayed in Table 1. Participants with higher NYHA class were more likely to be older, female, and have a history of hypertension, type 2 diabetes, chronic obstructive pulmonary disease, sleep apnoea, any atherosclerotic cardiovascular disease, and prior HF hospitalization as compared to lower NYHA class. Higher baseline NYHA class was additionally associated with higher body mass index, longer HF duration, lower LVEF, atrial fibrillation/flutter at the time of enrolment, higher NT-proBNP concentrations, and lower baseline estimated glomerular filtration rate. Participants with baseline NYHA class III/IV were more likely to be treated with loop diuretics, beta-blockers, and mineralocorticoid receptor antagonists. Between-group use of an angiotensin receptor–neprilysin inhibitor was similar at baseline. Clinical profiles and medication use patterns were well-balanced between treatment arms, irrespective of baseline NYHA functional class group.

Table 1 Baseline characteristics by New York Heart Association functional class

Characteristic	NYHA class II (n = 4713)	NYHA class III or IV (n = 1549)	p-value
Age, years	71.5 ± 9.6	72.1 ± 9.4	0.029
Age groups, years			0.06
≤65	1151 (24.4)	353 (22.8)	
65–75	1835 (38.9)	577 (37.2)	
>75	1727 (36.6)	619 (40.0)	
Men	2714 (57.6)	802 (51.8)	<0.001
Race			<0.001
White	3201 (67.9)	1237 (79.9)	
Asian	1065 (22.6)	209 (13.5)	
Black or African American	120 (2.5)	39 (2.5)	
American Indian or Alaska Native	145 (3.1)	44 (2.8)	
Other	182 (3.9)	20 (1.3)	
Geographic region			<0.001
Europe and Saudi Arabia	2079 (44.1)	926 (59.8)	
Asia	1030 (21.9)	196 (12.7)	
Latin America	978 (20.8)	203 (13.1)	
North America	626 (13.3)	224 (14.5)	
History of AFF	2573 (54.6)	978 (63.1)	<0.001
History of stroke	415 (8.8)	182 (11.7)	<0.001
History of dyslipidaemia	3069 (65.1)	921 (59.5)	<0.001
History of type 2 diabetes mellitus	2070 (43.9)	736 (47.5)	0.014
History of chronic obstructive pulmonary disease	452 (9.6)	240 (15.5)	<0.001
History of non-coronary revascularization	115 (2.4)	25 (1.6)	0.06
History of sleep apnoea	334 (7.1)	151 (9.7)	<0.001
Prior myocardial infarction	1243 (26.4)	396 (25.6)	0.53
History of hypertension	4135 (87.7)	1417 (91.5)	<0.001
Prior HF hospitalization	1709 (36.3)	830 (53.6)	<0.001
Coronary artery disease	2327 (49.4)	837 (54.0)	0.001
Atherosclerotic cardiovascular disease	2613 (55.4)	939 (60.6)	<0.001
Smoking status			<0.001
Current	363 (7.7)	121 (7.8)	
Former	1776 (37.7)	485 (31.3)	
Never	2574 (54.6)	943 (60.9)	
Baseline body mass index, kg/m ²	29.4 ± 5.9	31.1 ± 6.6	<0.001
Body mass index groups, kg/m ²			<0.001
<18.5 (underweight)	46 (1.0)	8 (0.5)	
18.5–24.9 (normal weight)	1064 (22.6)	279 (18.0)	
25.0–29.9 (overweight)	1633 (34.7)	439 (28.4)	
30.0–34.9 (class I obesity)	1160 (24.6)	414 (26.7)	
35.0–39.9 (class II obesity)	560 (11.9)	238 (15.4)	
≥40 (class III obesity)	245 (5.2)	170 (11.0)	
Time from diagnosis of HF to baseline			<0.001
0–3 months	472 (10.0)	96 (6.2)	
>3–6 months	441 (9.4)	151 (9.7)	
>6–12 months	657 (14.0)	185 (11.9)	
>1–2 years	750 (15.9)	245 (15.8)	
>2–5 years	1151 (24.4)	417 (26.9)	
>5 years	1237 (26.3)	455 (29.4)	
KCCQ-TSS at baseline	73.8 ± 20.6	58.4 ± 22.7	<0.001
Baseline LVEF, %	54.5 ± 8.8	53.0 ± 8.5	<0.001
Pooled LVEF groups			<0.001
≤40%	4 (0.1)	0 (0.0)	
41–49%	1500 (31.8)	612 (39.5)	

Table 1 (Continued)

Characteristic	NYHA class II (n = 4713)	NYHA class III or IV (n = 1549)	p-value
50–59%	1704 (36.2)	552 (35.6)	
≥60%	1505 (31.9)	385 (24.9)	
Improved LVEF (prior LVEF ≤40%)	918 (19.5)	233 (15.0)	<0.001
Baseline NT-proBNP, ng/L	943 [583–1591]	1263 [764–2426]	<0.001
NT-proBNP in AFF, pg/ml	1322 [938–2055]	1642 [1042–2806]	<0.001
NT-proBNP when no AFF, pg/ml	673 [455–1173]	907 [532–1910]	<0.001
Baseline ECG AFF	1882 (39.9)	761 (49.1)	<0.001
Baseline systolic blood pressure, mmHg	128.3 ± 15.5	127.9 ± 15.0	0.34
Baseline diastolic blood pressure, mmHg	73.7 ± 10.4	74.7 ± 10.3	<0.001
Baseline HbA1c, %	6.5 ± 1.4	6.7 ± 1.5	<0.001
Baseline pulse, bpm	71.1 ± 11.8	72.6 ± 11.6	<0.001
Baseline creatinine, µmol/L	101.5 ± 31.0	105.6 ± 31.2	<0.001
Baseline eGFR, ml/min/1.73 m ²	62.0 ± 19.2	58.1 ± 18.7	<0.001
eGFR ≥60 ml/min/1.73 m ²	2505 (53.2)	686 (44.3)	<0.001
Loop diuretics	3482 (73.9)	1328 (85.7)	<0.001
ACEi	1744 (37.0)	551 (35.6)	0.30
ARB	1746 (37.1)	526 (34.0)	0.027
ARNI	217 (4.6)	84 (5.4)	0.19
Beta-blocker	3858 (81.9)	1318 (85.1)	0.004
MRA	1958 (41.6)	709 (45.8)	0.004
Pacemaker	477 (10.1)	185 (11.9)	0.043
ICD	82 (1.7)	31 (2.0)	0.50

Values are mean ± standard deviation, n (%), or median [interquartile range].

ACEi, angiotensin-converting enzyme inhibitor; AFF, atrial fibrillation/flutter; ARB, angiotensin receptor blocker; ARNI, angiotensin receptor–neprilysin inhibitor; ECG, electrocardiogram; eGFR, estimated glomerular filtration rate; HbA1c, glycated haemoglobin; HF, heart failure; ICD, implantable cardioverter-defibrillator; KCCQ-TSS, Kansas City Cardiomyopathy Questionnaire total symptom score; LVEF, left ventricular ejection fraction; MRA, mineralocorticoid receptor antagonist; NT-proBNP, N-terminal pro-B-type natriuretic peptide; NYHA, New York Heart Association.

Clinical outcomes by baseline NYHA class

As compared to participants with NYHA class II symptoms and functional status at baseline, those with baseline NYHA class III/IV were independently at higher risk of the primary outcome of time-to-first cardiovascular death or worsening HF event (adjusted HR 1.16, 95% CI 1.02–1.33; $p = 0.029$) and all-cause death (adjusted HR 1.22, 95% CI 1.06–1.40; $p = 0.006$) (online supplementary Figure S1). Participants with baseline NYHA class III/IV experienced higher rates of HF hospitalization (adjusted HR 1.15, 95% CI 0.98–1.36; $p = 0.087$) and cardiovascular death (adjusted HR 1.21, 95% CI 0.99–1.49; $p = 0.062$) compared with those with NYHA class II, but these did not reach statistical significance after covariate adjustment.

Treatment effects of dapagliflozin by baseline NYHA class

Treatment with dapagliflozin reduced the risk of the primary composite outcome irrespective of baseline NYHA class (HR 0.81 [95% CI 0.70–0.94] for NYHA class II vs. HR 0.80 [95% CI 0.65–0.98] for NYHA class III/IV; $p_{\text{interaction}} = 0.921$). There was no evidence of treatment heterogeneity by baseline NYHA class for any of the individual components of the primary endpoint, all-cause

mortality, and composite total HF events and cardiovascular death (Figure 1).

Participants with NYHA functional class III/IV exhibited more severe patient-reported symptoms at baseline as compared with NYHA functional class II, based on assessment with KCCQ-TSS. When compared with placebo, participants in both NYHA groups treated with dapagliflozin experienced significant improvement in patient-reported health status by week 32, with greater improvement among participants with NYHA functional class III/IV (mean difference in KCCQ-TSS, +1.8 [95% CI 0.7–2.9] for NYHA class II vs. +4.8 [95% CI 2.5–7.1] for NYHA class III/IV; $p_{\text{interaction}} = 0.011$). Similar findings were observed for KCCQ clinical summary score (CSS) and KCCQ overall summary score (OSS) (Figure 2). A responder analysis depicting the proportion of participants with clinically meaningful changes (≤ 5 point deterioration and ≥ 5 , ≥ 10 , and ≥ 15 point improvement) in KCCQ scores with dapagliflozin compared to placebo by baseline NYHA functional class at 32 weeks is presented in online supplementary Figure S2. For each KCCQ summary score, treatment effects of dapagliflozin on clinically meaningful improvement or deterioration in health status were similar among participants with baseline NYHA functional class II versus III/IV (online supplementary Table S2).

Dapagliflozin was well-tolerated, with no effect modification by baseline NYHA functional class on the risk of any adverse events

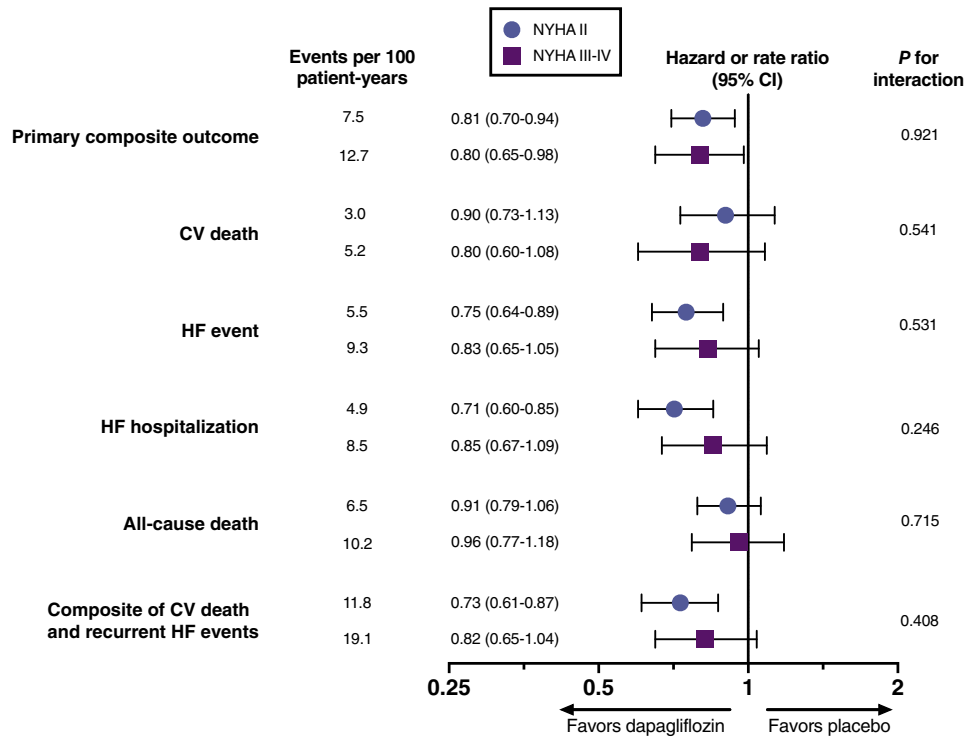


Figure 1 Effect of dapagliflozin versus placebo on primary and secondary endpoints by baseline New York Heart Association (NYHA) functional class. CI, confidence interval; CV, cardiovascular; HF, heart failure.

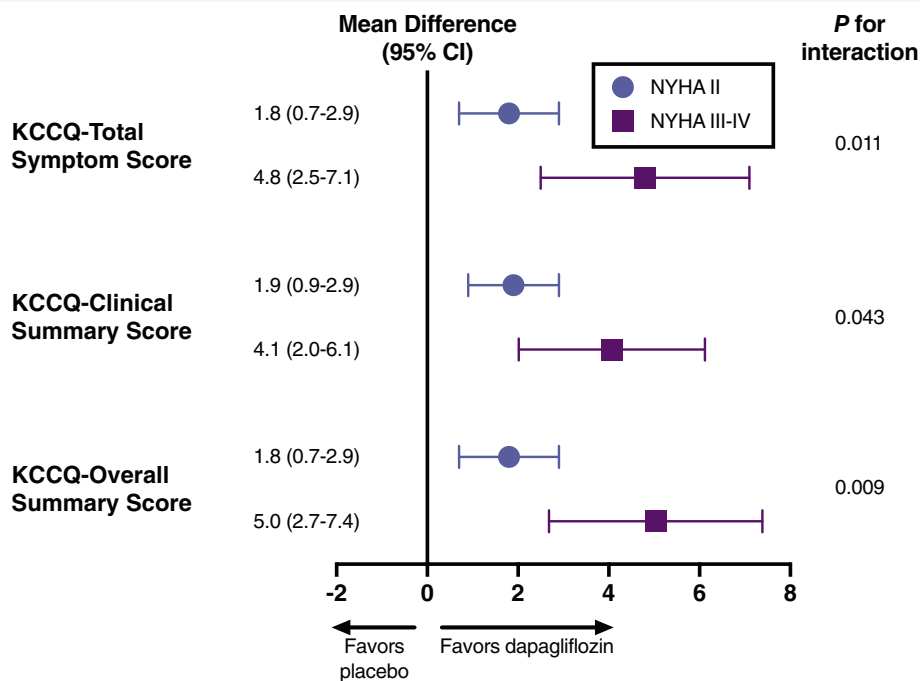


Figure 2 Effect of dapagliflozin versus placebo on symptom burden and other measures of health status by baseline New York Heart Association (NYHA) functional class. Values displayed as mean difference in Kansas City Cardiomyopathy Questionnaire (KCCQ) assessment score between dapagliflozin and placebo groups at week 32 compared with week 0. CI, confidence interval.

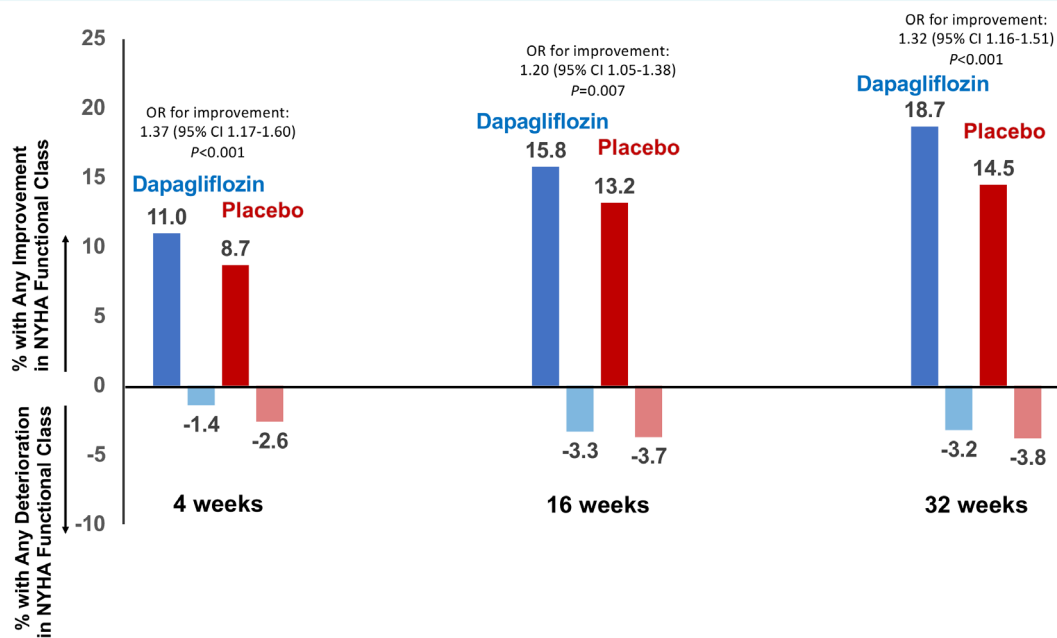


Figure 3 Effect of dapagliflozin versus placebo on New York Heart Association (NYHA) functional class over time. Values displayed as percentage of participants with any improvement or deterioration in NYHA functional class. Odds ratios (OR) represent OR for improvement rather than worsening NYHA functional class at each timepoint. CI, confidence interval.

with dapagliflozin as compared with placebo (online supplementary Table S3).

Treatment effects of dapagliflozin on NYHA class over time

Participants randomized to treatment with dapagliflozin more often experienced any improvement in NYHA class by week 4 (11.0% vs. 8.7%), 16 (15.8% vs. 13.2%), and 32 (18.7% vs. 14.5%) as compared with placebo. Treatment with dapagliflozin was additionally associated with a lower likelihood of deterioration in NYHA class at each timepoint. Participants treated with dapagliflozin were more likely than participants treated with placebo to experience an improvement rather than worsening in NYHA functional class as early as 4 weeks (OR 1.37, 95% CI 1.17–1.60; $p < 0.001$) and sustained through 32 weeks (OR 1.32, 95% CI 1.16–1.51; $p < 0.001$) (Figure 3). By week 32, participants randomized to the dapagliflozin arm numerically more often experienced a one-class improvement (18% vs. 14%) and two-class improvement (0.7% vs. 0.5%), and less often experienced a one-class deterioration (3.0% vs. 3.6%) and two-class deterioration (0.1% vs. 0.2%), as compared with placebo. Additionally, participants treated with dapagliflozin compared to placebo were significantly more likely to experience improvement to NYHA functional class I at 32 weeks (OR 1.43, 95% CI 1.17–1.75; $p < 0.001$). The distribution of NYHA class by treatment arm at week 32 is displayed in online supplementary Table S4.

Discussion

In this pre-specified analysis of DELIVER, we show that dapagliflozin reduced the risk of cardiovascular death or worsening HF events as compared with placebo among symptomatic patients irrespective of baseline NYHA functional class. Patients with more advanced functional class (III/IV) experienced greater improvement in symptom burden and other domains of health status with dapagliflozin compared with those with NYHA functional class II. Additionally, participants treated with dapagliflozin were significantly more likely to experience any improvement, more likely to achieve NYHA functional class I, and less likely to experience any deterioration in NYHA class over time. Improvement in NYHA functional class was observed early (4 weeks) and sustained through 32 weeks. Taken together, these findings demonstrate that treatment with dapagliflozin provides significant, early, and sustained benefit on NYHA class across a wide spectrum of functional impairment (Graphical Abstract).

Prior trials evaluating the efficacy of SGLT2i in HFpEF have suggested potential attenuation of relative treatment benefits among those with higher (i.e. III/IV) baseline NYHA class. A meta-analysis of the EMPEROR-Reduced (Empagliflozin Outcome Trial in Patients With Chronic Heart Failure With Reduced Ejection Fraction) and DAPA-HF (Dapagliflozin and Prevention of Adverse outcomes in Heart Failure) trials demonstrated a nominally significant treatment-by-subgroup interaction for NYHA functional class, with potentially less clinical benefit in those with NYHA class III/IV as compared with NYHA class II patients.¹⁶ The observed discrepancy in the consistency of the effect of SGLT2i across NYHA

function classes by HF phenotype may be attributable to differences in characteristics of the trial participants and/or pathophysiologic mechanisms in HFpEF as compared to HFmrEF and HFpEF. As compared with both EMPEROR-Reduced and DAPA-HF, wherein the incidence rates of HF hospitalization and cardiovascular death events were more balanced,^{14,15} HF hospitalization accounted for a relatively higher proportion of primary events in DELIVER. This heightened burden of HF hospitalization in HFmrEF and HFpEF²¹ may be similarly modified by SGLT2i across a range of baseline functional status. Further, as compared with EMPEROR-Reduced and DAPA-HF, DELIVER included participants with a higher proportion of cardiometabolic comorbidities, including obesity, hypertension, and atrial fibrillation/flutter,¹⁹ which in turn are particularly strongly linked with impaired health status and functional limitation in HFpEF.^{10,11,22–27} However, comorbid cardiac and non-cardiac conditions especially prevalent in this population, including anaemia, chronic kidney disease, hypertension, and obesity, may be favourably modified by SGLT2i.^{28,29} These factors underscore the importance of evaluating the therapeutic effects of SGLT2i across a range of baseline functional limitations in HFmrEF and HFpEF.

In this analysis, we show that HF outcomes are substantially improved with dapagliflozin, even among participants with advanced NYHA functional class at baseline. These findings are concordant with and extend the results of previous analyses of the EMPEROR-Preserved (Empagliflozin Outcome Trial in Patients With Chronic Heart Failure With Preserved Ejection Fraction) trial showing improved odds of improvement in NYHA functional class and overall health status after treatment with SGLT2i in HFmrEF and HFpEF.^{30,31} Improvement in NYHA functional class also occurred early in EMPEROR-Preserved, with statistically significant benefits observed by 12 weeks and sustained for at least 2 years. We show that improvement in functional status may occur even earlier (i.e. 4 weeks), and is seen regardless of baseline NYHA functional class. In addition, participants with NYHA class III/IV symptoms in DELIVER experienced greater improvements in multiple KCCQ summary scores as compared with those with NYHA class II. These observations are well-aligned with the results of PRESERVED-HF (Dapagliflozin in Preserved Ejection Fraction Heart Failure), a trial that enrolled a highly symptomatic cohort of patients with high rates of multimorbidity.³² These findings suggest that, instead of a barrier to clinical benefit, impaired functional status may be a unique therapeutic opportunity for SGLT2i in contemporary HFmrEF and HFpEF.

Baseline NYHA functional classification was highly and independently predictive of subsequent HF events and all-cause mortality in DELIVER after adjusting for numerous covariates, emphasizing the important role of NYHA functional classification in both clinical practice and clinical trials for patients with HFmrEF and HFpEF. Although clinician assessment of NYHA functional classification in practice may be limited by inconsistent methodology and high interobserver variability,⁷ these data reinforce its contemporary prognostic relevance. Further, contemporary HF guidelines recommend the use of the NYHA functional classification to help inform management decisions (e.g. in the context of perceived worsening or improvement functional class),^{12,13} highlighting that clinician-assessed measures remain central to HF care.

However, we recognize that patient-reported outcomes (such as the KCCQ) are equally if not more important from a patient perspective, and their collection should continue to be prioritized in research and clinical settings. Of note, given KCCQ has been shown to be more responsive to clinically meaningful change than NYHA class over time,⁸ the improvement in NYHA classification observed in DELIVER underscores the clinically important effects of dapagliflozin on overall health status.

Study limitations

Key limitations of this analysis should be highlighted. First, DELIVER predominantly enrolled patients with NYHA functional class II and III symptoms at baseline, hence findings may not readily generalize to adjacent groups with NYHA class I and IV symptom. However, the findings reported herein are concordant with those reported by a prior trial with higher enrolment of participants with NYHA functional class III/IV at baseline.³² Second, serial NYHA assessment was not performed beyond 32 weeks, but no signal of attenuation was observed until this point to suggest that these clinical benefits would wane with time. Third, the apparently lower extent of improvement in KCCQ scores among participants with baseline NYHA functional class II versus III/IV may reflect a limited capacity for improvement owing to good baseline health status. Indeed, baseline KCCQ is known to be predictive of short-term changes in KCCQ.³³ However, when applying benchmarks for clinically meaningful changes in responder analyses, it is noteworthy that participants in DELIVER experienced similar clinically meaningful changes in KCCQ with dapagliflozin, irrespective of baseline NYHA functional class. Finally, we relied on investigator-reported NYHA functional class, and assessment of NYHA class is known to be subject to inter-rater variability.

Conclusions

Among symptomatic patients with HFmrEF or HFpEF, treatment with dapagliflozin provided clinical benefit irrespective of baseline NYHA class and those with advanced NYHA functional class experienced relatively greater health status benefits with dapagliflozin. Initiation of dapagliflozin led to early, sustained, and clinically meaningful improvements in NYHA functional class over time.

Supplementary Information

Additional supporting information may be found online in the Supporting Information section at the end of the article.

Funding

DELIVER was funded by AstraZeneca.

Conflict of interest: M.V. received research grant support or served on advisory boards for American Regent, Amgen, AstraZeneca, Bayer AG, Baxter Healthcare, Boehringer Ingelheim, Cytokinetics, Lexicon Pharmaceuticals, Novartis, Pharmacosmos, Relypsa, Roche Diagnostics, Sanofi, and Tricog Health, speaker

engagements with AstraZeneca, Novartis, and Roche Diagnostics, and participates in clinical trial committees for studies sponsored by Galmed, Novartis, Bayer AG, Occlutech, and Impulse Dynamics. B.L.C. has received consulting fees from Amgen, Boehringer Ingelheim, Cardurion, Corvia, and Novartis. R.A.d.B. received research grant support from AstraZeneca, Abbott, Boehringer Ingelheim, Cardior Pharmaceuticals GmbH, Ionis Pharmaceuticals, Inc., Novo Nordisk, and Roche; speaker engagements with Abbott, AstraZeneca, Bayer, Novartis, and Roche. A.S.D. reports institutional grant support from Abbott, Alnylam, AstraZeneca, Bayer, Novartis and consulting fees from Abbott, Alnylam, AstraZeneca, Avidity, Axon Therapeutics, Bayer, Biofourmis, Boston Scientific, Cytokinetics, GlaxoSmithKline, Merck, Novartis, Parxel, Regeneron, Roche, and Verily. A.F.H. reports research grant support from American Regent, Amgen, AstraZeneca, Bayer, Boehringer Ingelheim, Merck, Novartis, SomaLogic and Verily; and has served as a consultant or on the Advisory Board for Amgen, AstraZeneca, Bayer, Boehringer Ingelheim, Boston Scientific, Bristol Myers Squibb, Cytokinetics, Eidos, Intercept, Merck, and Novartis. S.E.I. has served on clinical trial committees or as a consultant to AstraZeneca, Boehringer Ingelheim, Novo Nordisk, Lexicon, Merck, Pfizer, vTv Therapeutics, Abbott, and Esperion; and has given lectures sponsored by AstraZeneca and Boehringer Ingelheim. P.S.J. has received research funds (paid to his institution) for his work on the DELIVER and DAPA-HF trials by AstraZeneca; he has also received consulting and speaking fees from Novartis, AstraZeneca, Boehringer Ingelheim, research funding from Boehringer Ingelheim, and remuneration of clinical trial work from Novo Nordisk and Bayer. M.K. reports research grant support from AstraZeneca and Boehringer Ingelheim; had served as a consultant or on an advisory board for Alnylam, Amgen, Applied Therapeutics, AstraZeneca, Bayer, Boehringer Ingelheim, Cytokinetics, Esperion Therapeutics, Eli Lilly, Janssen, Lexicon, Merck (Diabetes and Cardiovascular), Pharmacosmos, Novo Nordisk, Sanofi, and Vifor; has received other research support from AstraZeneca; and has received honoraria from AstraZeneca, Boehringer Ingelheim, and Novo Nordisk. C.S.P.L. is supported by a Clinician Scientist Award from the National Medical Research Council of Singapore; has received research support from Bayer and Roche Diagnostics; has served as consultant or on the Advisory Board/Steering Committee/Executive Committee for Actelion, Alleviant Medical, Allysta Pharma, Amgen, AnaCardio AB, Applied Therapeutics, AstraZeneca, Bayer, Boehringer Ingelheim, Boston Scientific, Cytokinetics, Darma Inc., EchoNous Inc, Eli Lilly, Impulse Dynamics, Ionis Pharmaceutical, Janssen Research & Development LLC, Medscape/WebMD Global LLC, Merck, Novartis, NovoNordisk, Prosciento Inc, Radcliffe Group Ltd., Roche Diagnostics, Sanofi, Siemens Healthcare Diagnostics and Us2.ai; and serves as co-founder and non-executive director of Us2.ai. A.M.L., D.L., and M.P. are employees and shareholders of AstraZeneca. F.A.M. received consultation fees and research grants from AstraZeneca, Baliarda, Bayer, Boehringer Ingelheim, Bristol Meyers Squibb, Gador, Milestone, Novartis, Pfizer, and St Lukes University. E.O.M. received research funds (paid to her institution) for clinical trials from American Regent, Amgen, AstraZeneca, Bayer AG, Cardurion, Cytokinetics, Novartis, and Pfizer; and consulting fees paid

to her or her institution from AstraZeneca, Bayer AG, Boehringer Ingelheim, Cytokinetics, Eli Lilly and Janssen, as well as speaker fees from AstraZeneca, Bayer AG, and Boehringer Ingelheim. S.J.S. reports research grants from the National Institutes of Health (U54 HL160273, R01 HL107577, R01 HL127028, R01 HL140731, R01 HL149423), Actelion, AstraZeneca, Corvia, Novartis, and Pfizer, and consulting fees from Abbott, Actelion, AstraZeneca, Amgen, Aria CV, Axon Therapies, Bayer, Boehringer Ingelheim, Boston Scientific, Bristol Myers Squibb, Cardiora, Coridea, CVRx, Cyclerion, Cytokinetics, Edwards Lifesciences, Eidos, Eisai, GSK, Imara, Impulse Dynamics, Intellia, Ionis, Ironwood, Lilly, Merck, MyoKardia, Novartis, Novo Nordisk, Pfizer, Prothena, Regeneron, Rivus, Sanofi, Sardocor, Shifamed, Tenax, Tenaya, and United Therapeutics. J.J.V.M. received funding to his institution, Glasgow University, for his work on clinical trials, consulting, and other activities from Alnylam, Amgen, AstraZeneca, Bayer, Boehringer Ingelheim, Bristol Myers Squibb, Cardurion, Cytokinetics, Dal-Cor, GlaxoSmithKline, Ionis, KBP Biosciences, Novartis, Pfizer, and Theracos; and received personal lecture fees from the Corpus, Abbott, Hickma, Sun Pharmaceuticals, Medscape/Heart.Org, Radcliffe Cardiology, Servier Director, Global Clinical Trial Partners (GCTP). S.D.S. received research grants from Actelion, Alnylam, Amgen, AstraZeneca, Bellerophon, Bayer, Bristol Myers Squibb, Celladon, Cytokinetics, Eidos, Gilead, GlaxoSmithKline, Ionis, Lilly, Mesoblast, MyoKardia, National Institutes of Health/NHLBI, Neurotronik, Novartis, Novo Nordisk, Respicardia, Sanofi Pasteur, Theracos, US2.AI; and has consulted for Abbott, Action, Akros, Alnylam, Amgen, Arena, AstraZeneca, Bayer, Boehringer Ingelheim, Bristol Myers Squibb, Cardior, Cardurion, Corvia, Cytokinetics, Daiichi-Sankyo, GlaxoSmithKline, Lilly, Merck, MyoKardia, Novartis, Roche, Theracos, Quantum Genomics, Cardurion, Janssen, Cardiac Dimensions, Tenaya, Sanofi-Pasteur, Dinaqor, Tremeau, CellProThera, Moderna, American Regent, Sarepta, Lexicon, Anacardio, and Akros. All other authors have nothing to disclose.

References

1. Savarese G, Stolfo D, Sinagra G, Lund LH. Heart failure with mid-range or mildly reduced ejection fraction. *Nat Rev Cardiol.* 2022;**19**:100–16.
2. Tsao CW, Aday AW, Almarazooq ZI, Alonso A, Beaton AZ, Bittencourt MS, et al. Heart disease and stroke statistics – 2022 update: a report from the American Heart Association. *Circulation.* 2022;**145**:e153–639.
3. Bhatnagar R, Fonarow GC, Heidenreich PA, Ziaeian B. Expenditure on heart failure in the United States: the Medical Expenditure Panel Survey 2009–2018. *JACC Heart Fail.* 2022;**10**:571–80.
4. Shah SJ, Borlaug BA, Kitzman DW, AD MC, Blaxall BC, Agarwal R, et al. Research priorities for heart failure with preserved ejection fraction: National Heart, Lung, and Blood Institute Working Group summary. *Circulation.* 2020;**141**:1001–26.
5. Caraballo C, Desai NR, Mulder H, Alhanti B, Wilson FP, Fiuza M, et al. Clinical implications of the New York Heart Association classification. *J Am Heart Assoc.* 2019;**8**:e014240.
6. Tran AT, Chan PS, Jones PG, Spertus JA. Comparison of patient self-reported health status with clinician-assigned New York Heart Association classification. *JAMA Netw Open.* 2020;**3**:e2014319.
7. Raphael C, Briscoe C, Davies J, Ian Whinnett Z, Manisty C, Sutton R, et al. Limitations of the New York Heart Association functional classification system and self-reported walking distances in chronic heart failure. *Heart.* 2007;**93**:476–82.
8. Greene SJ, Butler J, Spertus JA, Hellkamp AS, Vaduganathan M, AD DV, et al. Comparison of New York Heart Association class and patient-reported outcomes for heart failure with reduced ejection fraction. *JAMA Cardiol.* 2021;**6**:522–31.

9. Madsen BK, Hansen JF, Stokholm KH, Brøns J, Husum D, Mortensen LS. Chronic congestive heart failure: description and survival of 190 consecutive patients with a diagnosis of chronic congestive heart failure based on clinical signs and symptoms. *Eur Heart J*. 1994;15:303–10.
10. Ahmed A, Aronow WS, Fleg JL. Higher New York Heart Association classes and increased mortality and hospitalization in patients with heart failure and preserved left ventricular function. *Am Heart J*. 2006;151:444–50.
11. Dalos D, Mascherbauer J, Zotter-Tufaro C, Duca F, Kammerlander AA, Aschauer S, et al. Functional status, pulmonary artery pressure, and clinical outcomes in heart failure with preserved ejection fraction. *J Am Coll Cardiol*. 2016;68:189–99.
12. McDonagh TA, Metra M, Adamo M, et al. 2021 ESC guidelines for the diagnosis and treatment of acute and chronic heart failure. *Eur Heart J*. 2021;42:3599–726.
13. Heidenreich PA, Bozkurt B, Aguilar D, Allen LA, Byun JJ, Colvin MM, et al. 2022 AHA/ACC/HFSA Guideline for the management of heart failure: a report of the American College of Cardiology/American Heart Association Joint Committee on Clinical Practice Guidelines. *J Am Coll Cardiol*. 2022;79:1757–80.
14. McMurray JJV, Solomon SD, Inzucchi SE, Køber L, Kosiborod MN, Martinez FA, et al.; DAPA-HF Trial Committees and Investigators. Dapagliflozin in patients with heart failure and reduced ejection fraction. *N Engl J Med*. 2019;381:1995–2008.
15. Packer M, Anker SD, Butler J, Filippatos G, Pocock SJ, Carson P, et al.; EMPEROR-Reduced Trial Investigators. Cardiovascular and renal outcomes with empagliflozin in heart failure. *N Engl J Med*. 2020;383:1413–24.
16. Zannad F, Ferreira JP, Pocock SJ, Anker SD, Butler J, Filippatos G, et al. SGLT2 inhibitors in patients with heart failure with reduced ejection fraction: a meta-analysis of the EMPEROR-Reduced and DAPA-HF trials. *Lancet*. 2020;396:819–29.
17. Solomon SD, McMurray JJV, Claggett BL, de Boer RA, DeMets D, Hernandez AF, et al. Dapagliflozin in heart failure with mildly reduced or preserved ejection fraction. *N Engl J Med*. 2022; doi:10.1056/NEJMoa2206286. in press.
18. Solomon SD, de Boer RA, DeMets D, Hernandez AF, Inzucchi SE, Kosiborod MN, et al. Dapagliflozin in heart failure with preserved and mildly reduced ejection fraction: rationale and design of the DELIVER trial. *Eur J Heart Fail*. 2021;23:1217–25.
19. Solomon SD, Vaduganathan M, Claggett BL, de Boer RA, DeMets D, Hernandez AF, et al. Baseline characteristics of patients with HF with mildly reduced and preserved ejection fraction: DELIVER trial. *JACC Heart Fail*. 2022;10:184–97.
20. Lin DY, Wei LJ, Yang I, Ying Z. Semiparametric regression for the mean and rate functions of recurrent events. *J R Stat Soc Ser B Stat Methodol*. 2000;62:711–30.
21. Lam CSP, Gamble GD, Ling LH, Sim D, KTG L, PSD Y, et al. Mortality associated with heart failure with preserved vs. reduced ejection fraction in a prospective international multi-ethnic cohort study. *Eur Heart J*. 2018;39:1770–80.
22. Chioncel O, Lainscak M, Seferovic PM, Anker SD, Crespo-Leiro MG, Harjola VP, et al. Epidemiology and one-year outcomes in patients with chronic heart failure and preserved, mid-range, and reduced ejection fraction: an analysis of the ESC Heart Failure Long-Term Registry. *Eur J Heart Fail*. 2017;19:1574–85.
23. Vergaro G, Ghionzoli N, Innocenti L, Taddei C, Giannoni A, Valleggi A, et al. Noncardiac versus cardiac mortality in heart failure with preserved, midrange, and reduced ejection fraction. *J Am Heart Assoc*. 2019;8:e013441.
24. Reddy YNV, Rikhi A, Obokata M, Shah SJ, Lewis GD, AbouEzzedine OF, et al. Quality of life in heart failure with preserved ejection fraction: importance of obesity, functional capacity, and physical inactivity. *Eur J Heart Fail*. 2020;22:1009–18.
25. Bansal N, Zelnick L, Bhat Z, Dobre M, He J, Lash J, et al. Burden and outcomes of heart failure hospitalizations in adults with chronic kidney disease. *J Am Coll Cardiol*. 2019;73:2691–700.
26. Pandey A, Vaduganathan M, Arora S, Qamar A, Mentz RJ, Shah SJ, et al. Temporal trends in prevalence and prognostic implications of comorbidities among patients with acute decompensated heart failure: the ARIC study community surveillance. *Circulation*. 2020;142:230–43.
27. Edelmann F, Stahrenberg R, Gelbrich G, Durstewitz K, Angermann CE, Dungen HD, et al. Contribution of comorbidities to functional impairment is higher in heart failure with preserved than with reduced ejection fraction. *Clin Res Cardiol*. 2011;100:755–64.
28. Lopaschuk GD, Verma S. Mechanisms of cardiovascular benefits of sodium glucose co-transporter 2 (SGLT2) inhibitors: a state-of-the-art review. *JACC Basic Transl Sci*. 2020;5:632–44.
29. Braunwald E. Gliflozins in the management of cardiovascular disease. *N Engl J Med*. 2022;386:2024–34.
30. Packer M, Butler J, Zannad F, Filippatos G, Ferreira JP, Pocock SJ, et al. Effect of empagliflozin on worsening heart failure events in patients with heart failure and preserved ejection fraction: EMPEROR-Preserved trial. *Circulation*. 2021;144:1284–94.
31. Butler J, Filippatos G, Siddiqi TJ, Brueckmann M, Böhm M, Chopra VK, et al. Empagliflozin, health status, and quality of life in patients with heart failure and preserved ejection fraction: the EMPEROR-Preserved trial. *Circulation*. 2022;145:184–93.
32. Nassif ME, Windsor SL, Borlaug BA, Kitzman DW, Shah SJ, Tang F, et al. The SGLT2 inhibitor dapagliflozin in heart failure with preserved ejection fraction: a multicenter randomized trial. *Nat Med*. 2021;27:1954–60.
33. Luo N, O'Connor CM, Cooper LB, Sun JL, Coles A, Reed SD, et al. Relationship between changing patient-reported outcomes and subsequent clinical events in patients with chronic heart failure: insights from HF-ACTION. *Eur J Heart Fail*. 2019;21:63–70.