






# Heart failure, peripheral artery disease, and dapagliflozin: a patient-level meta-analysis of DAPA-HF and DELIVER

Jawad H. Butt <sup>1,2</sup>, Toru Kondo<sup>1,3</sup>, Mingming Yang<sup>1</sup>, Pardeep S. Jhund<sup>1</sup>, Kieran F. Docherty<sup>1</sup>, Muthiah Vaduganathan <sup>4</sup>, Brian L. Claggett<sup>4</sup>, Adrian F. Hernandez<sup>5</sup>, Carolyn S.P. Lam <sup>6,7</sup>, Silvio E. Inzucchi<sup>8</sup>, Felipe A. Martinez<sup>9</sup>, Rudolf A. de Boer<sup>10</sup>, Mikhail N. Kosiborod<sup>11</sup>, Akshay S. Desai<sup>4</sup>, Lars Køber<sup>3</sup>, Piotr Ponikowski<sup>12</sup>, Marc S. Sabatine<sup>13</sup>, Sanjiv J. Shah<sup>14</sup>, Natalia Zaozerska<sup>15</sup>, Ulrica Wilderäng<sup>15</sup>, Olof Bengtsson <sup>15</sup>, Scott D. Solomon<sup>4</sup>, and John J.V. McMurray <sup>1\*</sup>

<sup>1</sup>British Heart Foundation Cardiovascular Research Centre, University of Glasgow, 126 University Place, Glasgow G12 8TA, UK; <sup>2</sup>Department of Cardiology, Copenhagen University Hospital Rigshospitalet, Copenhagen, Denmark; <sup>3</sup>Department of Cardiology, Nagoya University Graduate School of Medicine, Nagoya, Japan; <sup>4</sup>Cardiovascular Division, Brigham and Women's Hospital, Harvard Medical School, Boston, MA, USA; <sup>5</sup>Duke University Medical Center, Durham, NC, USA; <sup>6</sup>National Heart Centre Singapore, Singapore; <sup>7</sup>Duke-National University of Singapore, Singapore; <sup>8</sup>Yale School of Medicine, New Haven, CT, USA; <sup>9</sup>University of Cordoba, Cordoba, Argentina; <sup>10</sup>Erasmus Medical Center, Rotterdam, The Netherlands; <sup>11</sup>Saint Luke's Mid America Heart Institute, Kansas City, MO, USA; <sup>12</sup>Department of Heart Disease, Wroclaw Medical University, Wroclaw, Poland; <sup>13</sup>TIMI Study Group, Division of Cardiovascular Medicine, Brigham and Women's Hospital, Boston, MA, USA; <sup>14</sup>Northwestern University Feinberg School of Medicine, Chicago, IL, USA; and <sup>15</sup>Late-Stage Development, Cardiovascular, Renal, and Metabolism, BioPharmaceuticals R&D, AstraZeneca, Gothenburg, Sweden

Received 17 March 2023; revised 19 April 2023; accepted 27 April 2023

## Abstract

### Aims

Because an increased risk of amputation with canagliflozin was reported in the CANVAS trials, there has been a concern about the safety of sodium–glucose cotransporter 2 inhibitors in patients with peripheral artery disease (PAD) who are at higher risk of amputation.

### Methods and results

A patient-level pooled analysis of the DAPA-HF and DELIVER trials, which evaluated the efficacy and safety of dapagliflozin in patients with heart failure (HF) with reduced, mildly reduced/preserved ejection fraction, respectively, was conducted. In both trials, the primary outcome was the composite of worsening HF or cardiovascular death, and amputation was a pre-specified safety outcome. Peripheral artery disease history was available for 11 005 of the total 11 007 patients. Peripheral artery disease was reported in 809 of the 11 005 patients (7.4%). Median follow-up was 22 months (interquartile range 17–30). The rate of the primary outcome (per 100 person-years) was higher in PAD patients than that in non-PAD patients: 15.1 [95% confidence interval (CI) 13.1–17.3] vs. 10.6 (10.2–11.1); adjusted hazard ratio 1.23 (95% CI 1.06–1.43). The benefit of dapagliflozin on the primary outcome was consistent in patients with [hazard ratio 0.71 (95% CI 0.54–0.94)] and without PAD [0.80 (95% CI 0.73–0.88)] ( $P_{\text{interaction}} = 0.39$ ). Amputations, while more frequent in PAD patients, were not more common with dapagliflozin, compared with placebo, irrespective of PAD status (PAD, placebo 4.2% vs. dapagliflozin 3.7%; no PAD, placebo 0.4% vs. dapagliflozin 0.4%) ( $P_{\text{interaction}} = 1.00$ ). Infection rather than ischaemia was the main trigger for amputation, even in patients with PAD.

### Conclusion

The risk of worsening HF or cardiovascular death was higher in patients with PAD, as was the risk of amputation. The benefits of dapagliflozin were consistent in patients with and without PAD, and dapagliflozin did not increase the risk of amputation.

\* Corresponding author. Tel: +44 141 330 3479, Fax: +44 141 330 6955, Email: [john.mcmurray@glasgow.ac.uk](mailto:john.mcmurray@glasgow.ac.uk)

© The Author(s) 2023. Published by Oxford University Press on behalf of the European Society of Cardiology.

This is an Open Access article distributed under the terms of the Creative Commons Attribution-NonCommercial License (<https://creativecommons.org/licenses/by-nc/4.0/>), which permits non-commercial re-use, distribution, and reproduction in any medium, provided the original work is properly cited. For commercial re-use, please contact [journals.permissions@oup.com](mailto:journals.permissions@oup.com)

## Structured Graphical Abstract

### Key Question

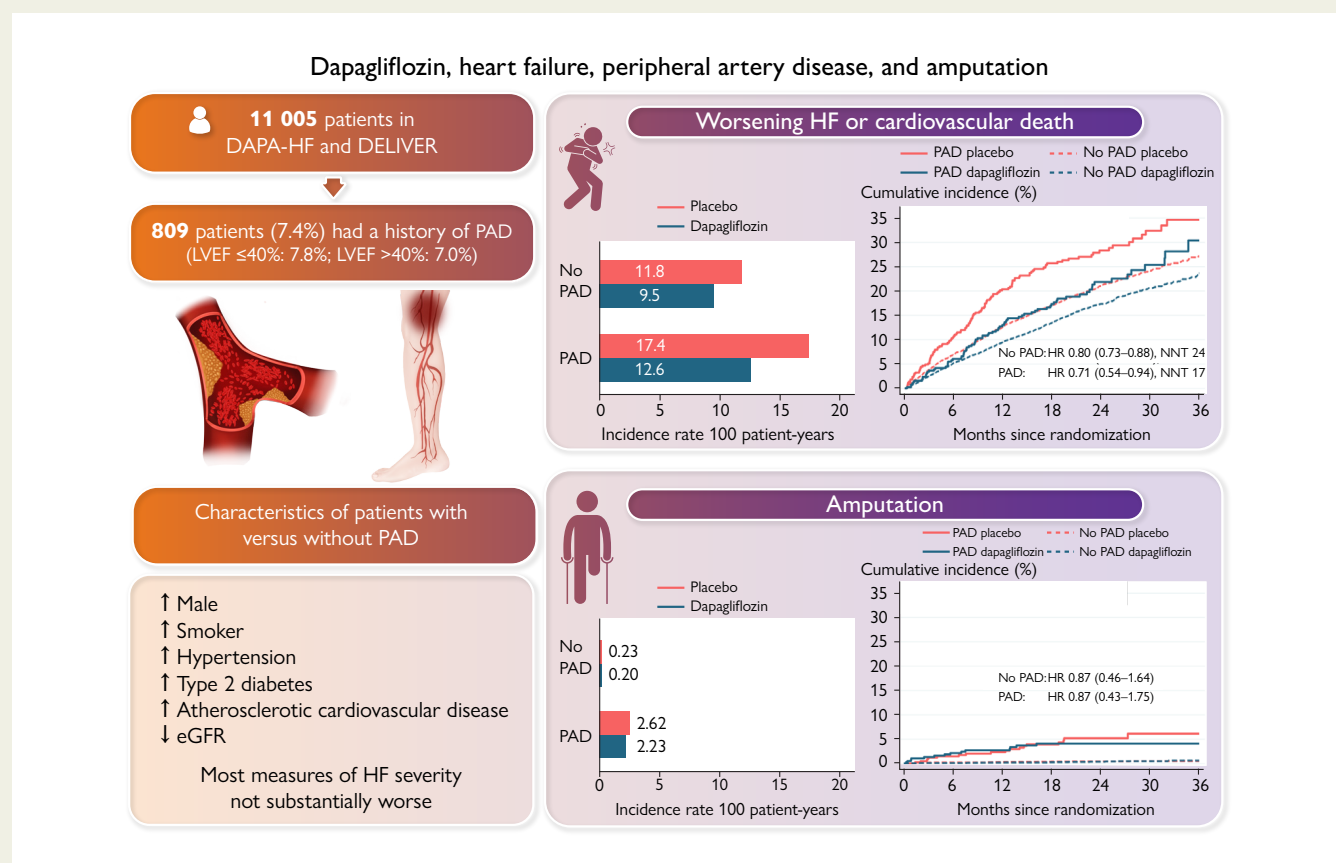
Is dapagliflozin, a sodium-glucose cotransporter 2 inhibitor, a safe and effective therapy in patients with heart failure (HF) and peripheral artery disease (PAD)?

### Key Finding

In a patient-level pooled analysis of more than 11,000 patients with HF enrolled in the DAPA-HF and DELIVER trials, the benefit of dapagliflozin, compared with placebo, on the primary outcome, and key secondary outcomes, was consistent in patients with and without PAD. While amputations, and other adverse events, were more frequent in PAD patients, they were not more common with dapagliflozin, compared with placebo, irrespective of PAD status.

### Take Home Message

Dapagliflozin is a safe and effective therapy in patients with HF and PAD.



The upper part of the figure shows the incidence rate, cumulative incidence, and the risk of the primary outcome (worsening HF or cardiovascular death) with dapagliflozin compared with placebo according to PAD status. The lower part of the figure shows the incidence rate, cumulative incidence, and the risk of amputations with dapagliflozin compared with placebo according to PAD status. eGFR, estimated glomerular filtration rate; HF, heart failure; HR, hazard ratio; LVEF, left ventricular ejection fraction; PAD, peripheral artery disease.

### Keywords

Heart failure with reduced ejection fraction • Heart failure with preserved ejection fraction • Peripheral artery disease • Amputation • Clinical trial

## Introduction

Since the Canagliflozin Cardiovascular Assessment Study (CANVAS) trials reported a higher rate of lower extremity amputations in the

canagliflozin group, compared to the placebo group, there has been a concern about the safety of sodium–glucose cotransporter 2 (SGLT2) inhibitors in patients with peripheral artery disease (PAD) who have an inherently higher risk of amputation compared to

**Table 1** Baseline characteristics according to a history of PAD

	No PAD n = 10 196	PAD n = 809	P-value
Age (years), mean (SD)	69.3 ± 10.6	70.7 ± 8.8	<0.001
Sex, n (%)			<0.001
Women	3663 (35.9)	193 (23.9)	
Men	6533 (64.1)	616 (76.1)	
Race, n (%)			<0.001
White	7126 (69.9)	644 (79.6)	
Asian	2273 (22.3)	117 (14.5)	
Black or African American	358 (3.5)	27 (3.3)	
Other	439 (4.3)	21 (2.6)	
Geographic region, n (%)			<0.001
Europe and Saudi Arabia	4743 (46.5)	414 (51.2)	
North America	1350 (13.2)	178 (22.0)	
South America	1892 (18.6)	106 (13.1)	
Asia/Pacific	2211 (21.7)	111 (13.7)	
Physiological measures			
Systolic blood pressure (mmHg), mean (SD)	125.2 ± 16.1	128.2 ± 16.1	<0.001
Diastolic blood pressure (mmHg), mean (SD)	73.8 ± 10.4	73.4 ± 10.1	0.30
Heart rate (b.p.m.), mean (SD)	71.6 ± 11.8	70.0 ± 11.2	<0.001
Body mass index (kg/m <sup>2</sup> ), mean (SD)	29.2 ± 6.1	28.6 ± 5.5	0.017
Body mass index (kg/m <sup>2</sup> ), n (%)			0.041
<18.5	133 (1.3)	8 (1.0)	
18.5–24.9	2410 (23.7)	194 (24.0)	
25.0–29.9	3482 (34.2)	312 (38.6)	
30–34.9	2404 (23.6)	182 (22.5)	
≥ 35.0	1759 (17.3)	113 (14.0)	
NT-proBNP (pg/mL), median (IQR)	1172 (703–2107)	1269 (683–2336)	0.12
Atrial fibrillation/flutter on ECG	1531 (1025–2484)	1710 (1135–3056)	0.006
No atrial fibrillation/flutter on ECG	959 (564–1815)	1077 (578–2060)	0.073
Haemoglobin A1c (%), mean (SD)	6.5 ± 1.4	6.8 ± 1.5	<0.001
Creatinine (µmol/L), mean (SD)	102.8 ± 30.6	110.4 ± 32.0	<0.001
eGFR (mL/min/1.73m <sup>2</sup> ), mean (SD)	63.4 ± 19.5	59.4 ± 18.3	<0.001
Smoking status, n (%)			<0.001
Current	1042 (10.2)	135 (16.7)	
Former	3939 (38.6)	413 (51.1)	
Never	5215 (51.1)	261 (32.3)	
Duration of HF, n (%)			0.008
0–3 months	680 (6.7)	38 (4.7)	
>3–6 months	916 (9.0)	69 (8.5)	
>6–12 months	1301 (12.8)	94 (11.6)	

Continued

**Table 1 Continued**

	<b>No PAD n = 10 196</b>	<b>PAD n = 809</b>	<b>P-value</b>
>1–2 years	1571 (15.4)	110 (13.6)	
>2–5 years	2482 (24.4)	192 (23.7)	
>5 years	3241 (31.8)	306 (37.8)	
LVEF (%), mean (SD)	44.2 ± 14.0	43.6 ± 13.1	0.23
LVEF (%), n (%)			0.040
≤ 40	4375 (42.9)	372 (46.0)	
41–49	1947 (19.1)	166 (20.5)	
≥ 50	3874 (38.0)	271 (33.5)	
NYHA class, n (%)			0.11
II	7353 (72.1) <sup>a</sup>	562 (69.5)	
III/IV	2843 (27.9)	247 (30.5)	
KCCQ-TSS, mean (SD)	71.8 ± 22.0	69.0 ± 22.5	<0.001
KCCQ-CSS, mean (SD)	69.8 ± 20.7	66.8 ± 21.2	<0.001
KCCQ-OSS, mean (SD)	67.5 ± 20.4	64.9 ± 20.9	<0.001
Medical history, n (%)			
Hospitalization for HF	4430 (43.4)	359 (44.4)	0.61
Time from last HF hospitalization, n (%)			0.19
No prior HF hospitalization	5767 (56.6)	450 (55.6)	
0–3 months	1286 (12.6)	84 (10.4)	
3–6 months	655 (6.4)	62 (7.7)	
6–12 months	782 (7.7)	65 (8.0)	
>1 year	1706 (16.7)	148 (18.3)	
Atrial fibrillation	4936 (48.4)	347 (42.9)	0.002
Stroke	924 (9.1)	139 (17.2)	<0.001
Myocardial infarction	3318 (32.5)	413 (51.1)	<0.001
PCI or CABG	3678 (36.1)	512 (63.3)	<0.001
Angina	2327 (22.8)	283 (35.0)	<0.001
Hypertension	8343 (81.8)	731 (90.4)	<0.001
Type 2 diabetes	4345 (42.6)	444 (54.9)	<0.001
Treatment, n (%)			
ACEi	4559 (44.7)	396 (48.9)	0.020
ARB	3338 (32.7)	240 (29.7)	0.073
ACEi/ARB	7860 (77.1)	633 (78.2)	0.45
ARNI	746 (7.3)	63 (7.8)	0.62
Beta-blocker	9010 (88.4)	724 (89.5)	0.34
MRA	5634 (55.3)	402 (49.7)	0.002
Loop diuretic	7985 (78.3)	649 (80.2)	0.20
Any diuretic	9775 (95.9)	779 (96.3)	0.56
Digoxin	1118 (11.0)	65 (8.0)	0.010

Continued

**Table 1 Continued**

	No PAD n = 10 196	PAD n = 809	P-value
Statin	6559 (64.3)	656 (81.1)	<0.001
Antiplatelet	4656 (45.7)	566 (70.0)	<0.001
Anticoagulant	4990 (48.9)	361 (44.6)	0.018
CRT-P/CRT-D	424 (4.2)	30 (3.7)	0.54
ICD/CRT-D	1279 (12.5)	131 (16.2)	0.003

ACEi, angiotensin-converting enzyme inhibitor; ARB, angiotensin receptor blocker; ARNI, angiotensin receptor-neprilysin inhibitor; CABG, coronary artery bypass graft; CSS, clinical summary score; CRT, cardiac resynchronization therapy; eGFR, estimated glomerular filtration rate; HF, heart failure; ICD, implantable cardioverter-defibrillator; IQR, interquartile range; KCCQ, Kansas City Cardiomyopathy Questionnaire; LVEF, left ventricular ejection fraction; MRA, mineralocorticoid receptor antagonist; NYHA, New York Heart Association; NT-proBNP, N-terminal pro-B-type natriuretic peptide; OSS, overall summary score; PAD, peripheral artery disease; PCI, percutaneous coronary intervention; SD, standard deviation; TSS, total symptom score.

<sup>a</sup>1 additional patient was NYHA Class I.

individuals without PAD.<sup>1–3</sup> Although the findings in CANVAS have not been replicated with other SGLT2 inhibitors or in other populations,<sup>4–14</sup> some believe that this concern remains, including in people with heart failure (HF). This concern may, in part, be influenced by the notion that diuretics, ubiquitous in patients with HF,<sup>15</sup> have also been associated with a heightened risk of amputation, possibly because these agents cause volume depletion and increased blood viscosity, thereby further impairing perfusion through an already compromised circulation.<sup>16–18</sup> If this hypothesis is correct, then adding an SGLT2 inhibitor to a conventional diuretic could exacerbate this risk, since an SGLT2 inhibitor also causes diuresis (at least initially) and raises haematocrit. However, if these safety concerns were ill-founded, withholding SGLT2 inhibitors in HF patients with concomitant PAD would deprive a particularly high-risk group of patients of beneficial therapy. We and others have previously reported that HF patients with PAD are at up to a two-fold higher risk of death and a higher risk of hospital admission than HF patients without PAD.<sup>19–25</sup> To address this question further, we examined the safety and efficacy of the SGLT2 inhibitor dapagliflozin in over 11 000 patients with HF, 809 of whom had a history of PAD, enrolled in two placebo-controlled randomized trials, Dapagliflozin and Prevention of Adverse Outcomes in Heart Failure (DAPA-HF) and Dapagliflozin Evaluation to Improve the Lives of Patients with Preserved Ejection Fraction Heart Failure trial (DELIVER).<sup>7,9</sup>

## Methods

This was a *post hoc* analysis of two Phase 3 clinical trials. DAPA-HF and DELIVER were randomized, double-blind, controlled trials in patients with symptomatic HF and elevated natriuretic peptides, comparing the efficacy and safety of dapagliflozin 10 mg once daily with a matching placebo. The principal difference between the trials was that patients with a left ventricular ejection fraction (LVEF)  $\leq 40\%$  were randomized in DAPA-HF and those with a LVEF  $> 40\%$  in DELIVER. The design and primary results of both trials are published.<sup>7,9,26–29</sup> The trial protocols were approved by Ethics Committees at all participating institutions, and all patients provided written informed consent.

## Trial patients

Ambulatory patients in New York Heart Association (NYHA) functional Classes II to IV, with a LVEF  $\leq 40\%$  and elevated N-terminal pro-B-type natriuretic peptide (NT-proBNP), were eligible for DAPA-HF.<sup>26</sup>

Participants were required to receive guideline-recommended treatments for HF with a reduced ejection fraction (HFrEF). Key exclusion criteria were a history of Type 1 diabetes, symptomatic hypotension or a systolic blood pressure  $< 95$  mmHg, and an estimated glomerular filtration rate (eGFR)  $< 30$  mL/min/1.73m<sup>2</sup>.<sup>26</sup>

Ambulatory and hospitalized patients in NYHA functional Classes II–IV, with a LVEF  $> 40\%$  and elevated NT-proBNP, were eligible for DELIVER.<sup>28</sup> Participants were required to have evidence of structural heart disease (left atrial enlargement or left ventricular hypertrophy). All patients had to be receiving at least intermittent diuretic therapy. The main exclusion criteria were similar to those in DAPA-HF, although the eGFR threshold was lower in DELIVER (25 mL/min/1.73 m<sup>2</sup>).<sup>28</sup>

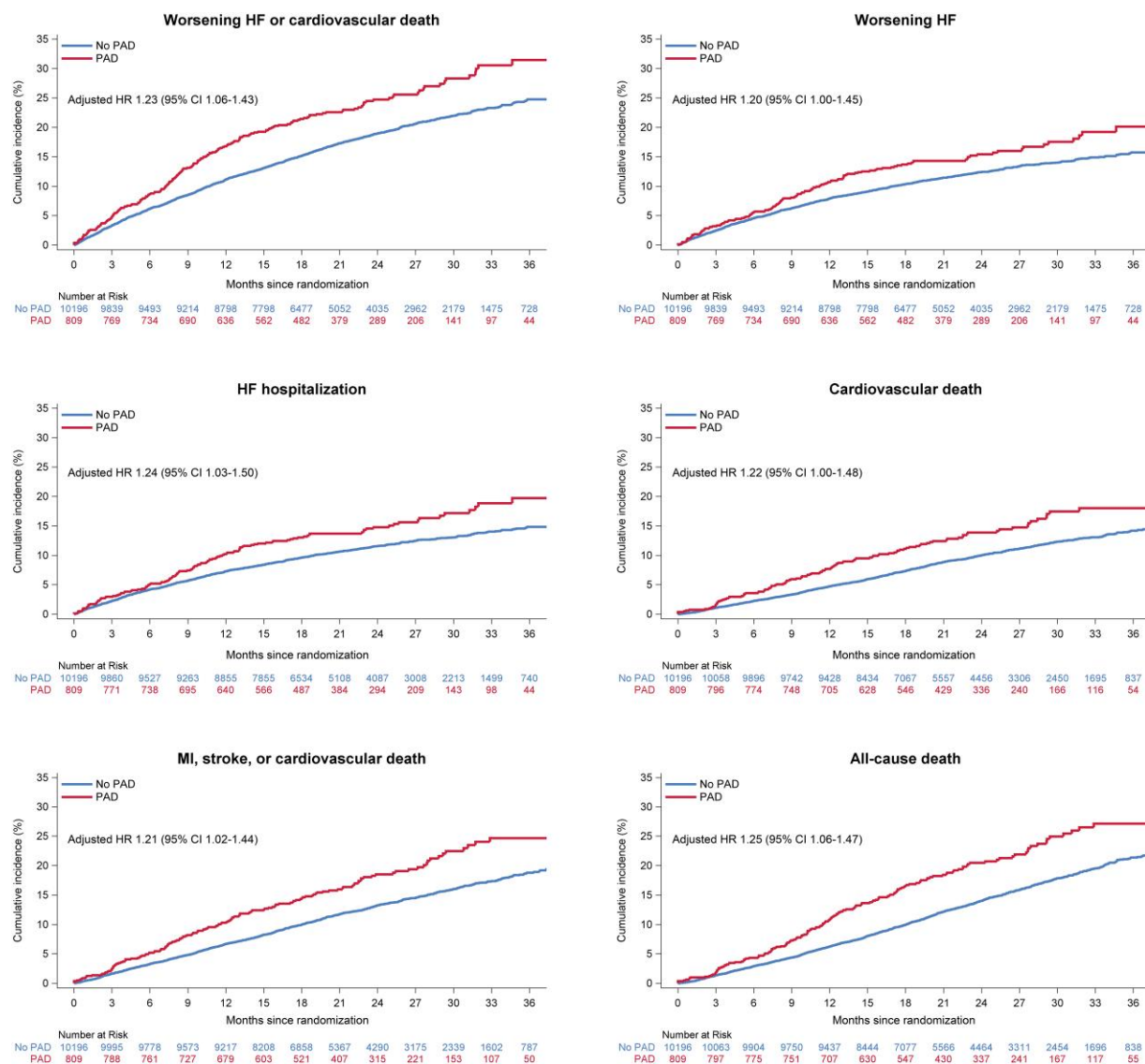
## History of peripheral artery disease

In both trials, data on medical and surgical history were investigator-reported and retrieved from the trial electronic case report forms (eCRF). The following eCRF variables were used to identify PAD: history of peripheral arterial occlusive disease, prior revascularization of a peripheral artery, and prior stent insertion in a peripheral artery. In a sensitivity analysis, the definition of PAD was expanded to include prior surgical amputation (any).

## Trial outcomes

The primary outcome in both trials was the composite of a worsening HF event or cardiovascular death. In the present study, we also examined each of the components of the primary outcome; the composite of HF hospitalization or cardiovascular death; total HF hospitalizations (first and repeat HF hospitalizations) and cardiovascular death; the composite of myocardial infarction, stroke, or cardiovascular death; all-cause death; and change from baseline to 8 months in the Kansas City Cardiomyopathy Questionnaire (KCCQ) total symptom score (KCCQ-TSS), overall symptom score (KCCQ-OSS), and clinical summary score (KCCQ-CSS). The definition of death from cardiovascular causes included deaths of undetermined causes, following the prespecified statistical analysis plan. Worsening HF events and cause of death were adjudicated by an independent clinical events committee in both trials. Data on myocardial infarction and stroke during follow-up were collected systemically in both trials, although these were only adjudicated in DAPA-HF and not in DELIVER. In both trials, amputation was a prespecified safety outcome.

All the efficacy analyses were performed according to the intention-to-treat principle. The safety analysis was performed in patients who had undergone randomization and received at least one dose of dapagliflozin or placebo. A total of 18 randomized patients were excluded from the safety analysis.



**Figure 1** Outcomes in patients with and without a history of peripheral artery disease. This figure shows the cumulative incidence of outcomes according to peripheral artery disease status at baseline. The Cox models were stratified according to Type 2 diabetes status and trial and adjusted for treatment assignment, a history of heart failure hospitalization, age, sex, geographical region, systolic blood pressure, heart rate, body mass index, log of N-terminal pro-B-type natriuretic peptide, estimated glomerular filtration rate, left ventricular ejection fraction, New York Heart Association functional class, a history of myocardial infarction, stroke, atrial fibrillation, and hypertension. CI, confidence interval; eGFR, estimated glomerular filtration rate; HF, heart failure; HR, hazard ratio; LVEF, left ventricular ejection fraction; NT-proBNP, N-terminal pro-B-type natriuretic peptide; NYHA, New York Heart Association; PAD, peripheral artery disease.

## Statistical analyses

Baseline characteristics according to PAD status were summarized as frequencies with percentages, means with standard deviation, or medians with interquartile ranges (IQRs). Differences in baseline characteristics were tested using the chi-square test for binary or categorical variables and the Wilcoxon test and two-sample *t*-test for nonnormal and normally distributed continuous variables, respectively.

Regardless of treatment allocation, time-to-event data were evaluated using the Kaplan–Meier estimator (all-cause death), the Aalen–Johansen estimator (all outcomes except all-cause death), and Cox proportional hazard models, stratified according to Type 2 diabetes status and trial and adjusted for treatment assignment and history of HF hospitalization (except in the analysis of all-cause death), and hazard ratios (HRs) with 95% confidence intervals

(CIs) were reported. Total events were evaluated with semiparametric proportional rate models,<sup>30</sup> stratified according to Type 2 diabetes status and trial and adjusted for treatment assignment and history of HF hospitalization, and rate ratios (RRs) with 95% CIs were reported. In addition, HRs and RRs, stratified according to Type 2 diabetes status and trial and adjusted for treatment assignment, a history of HF hospitalization, age, sex, geographical region, systolic blood pressure, heart rate, body mass index, log of NT-proBNP, eGFR, LVEF, NYHA functional class, a history of myocardial infarction, stroke, atrial fibrillation, and hypertension, were reported.

To compare the effects of dapagliflozin vs. placebo on clinical outcomes, time-to-event data and total events were evaluated with Cox proportional hazard models and semiparametric proportional rate models, respectively, and these models were stratified according to Type 2 diabetes status and



**Table 2** Outcomes according to a history of PAD

	No PAD n = 10 196	PAD n = 809
Worsening HF or cardiovascular death		
No. of events (%)	1918 (18.8)	202 (25.0)
Event rate per 100 person-years (95% CI)	10.6 (10.2–11.1)	15.1 (13.1–17.3)
HR (95% CI) <sup>a</sup>	Reference	1.34 (1.16–1.55)
HR (95% CI) <sup>b</sup>	Reference	1.23 (1.06–1.43)
Worsening HF		
No. of events (%)	1 258 (12.3)	127 (15.7)
Event rate per 100 person-years (95% CI)	7.0 (6.6–7.4)	9.5 (8.0–11.3)
HR (95% CI) <sup>a</sup>	Reference	1.28 (1.06–1.53)
HR (95% CI) <sup>b</sup>	Reference	1.20 (1.00–1.45)
HF hospitalization		
No. of events (%)	1 173 (11.5)	123 (15.2)
Event rate per 100 person-years (95% CI)	6.5 (6.1–6.8)	9.1 (7.6–10.9)
HR (95% CI) <sup>a</sup>	Reference	1.32 (1.10–1.59)
HR (95% CI) <sup>b</sup>	Reference	1.24 (1.03–1.50)
Cardiovascular death		
No. of events (%)	1 018 (10.0)	114 (14.1)
Event rate per 100 person-years (95% CI)	5.3 (5.0–5.6)	7.8 (6.5–9.3)
HR (95% CI) <sup>a</sup>	Reference	1.41 (1.16–1.71)
HR (95% CI) <sup>b</sup>	Reference	1.22 (1.00–1.48)
Myocardial infarction, stroke, or cardiovascular death		
No. of events (%)	1 353 (13.3)	150 (18.5)
Event rate per 100 person-years (95% CI)	7.2 (6.8–7.6)	10.6 (9.0–12.4)
HR (95% CI) <sup>a</sup>	Reference	1.42 (1.20–1.68)
HR (95% CI) <sup>b</sup>	Reference	1.21 (1.02–1.44)
All-cause death		
No. of events (%)	1 460 (14.3)	168 (20.8)
Event rate per 100 person-years (95% CI)	7.6 (7.2–8.0)	11.4 (9.8–13.3)
HR (95% CI) <sup>a</sup>	Reference	1.46 (1.25–1.72)
HR (95% CI) <sup>b</sup>	Reference	1.25 (1.06–1.47)
Total HF hospitalizations and cardiovascular death		
No. of events	2 854	302
RR (95% CI) <sup>a</sup>	Reference	1.32 (1.11–1.56)
RR (95% CI) <sup>b</sup>	Reference	1.17 (0.98–1.38)

CI, confidence interval; HF, heart failure; HR, hazard ratio; RR, rate ratio.

<sup>a</sup>Models were stratified by Type 2 diabetes status and trial and adjusted for treatment assignment and heart failure hospitalization (except in the analysis of all-cause death).

<sup>b</sup>Models were stratified by Type 2 diabetes status and trial and adjusted for treatment assignment, a history of heart failure hospitalization (except in the analysis of all-cause death), age, sex, geographical region, systolic blood pressure, heart rate, body mass index, log of *n*-terminal pro-B-type natriuretic peptide, estimated glomerular filtration rate, left ventricular ejection fraction, New York Heart Association, a history of myocardial infarction, stroke, atrial fibrillation, and hypertension.

**Table 3** Effects of dapagliflozin compared with placebo on outcomes according to a history of PAD

	No PAD n = 10 196		PAD n = 809		P-value for interaction
	Placebo n = 5074	Dapagliflozin n = 5122	Placebo n = 428	Dapagliflozin n = 381	
Worsening HF or cardiovascular death					0.39
No. of events (%)	1045 (20.6)	873 (17.0)	121 (28.3)	81 (21.3)	
Event rate per 100 person-years (95% CI)	11.8 (11.1–12.6)	9.5 (8.9–10.2)	17.4 (14.5–20.8)	12.6 (10.1–15.7)	
HR (95% CI) <sup>a</sup>	0.80 (0.73–0.88)		0.71 (0.54–0.94)		
Worsening HF					0.02
No. of events (%)	694 (13.7)	564 (11.0)	86 (20.1)	41 (10.8)	
Event rate per 100 person-years (95% CI)	7.8 (7.3–8.5)	6.1 (5.7–6.6)	12.4 (10.0–15.3)	6.4 (4.7–8.7)	
HR (95% CI) <sup>a</sup>	0.78 (0.70–0.87)		0.50 (0.34–0.72)		
HF hospitalization					0.01
No. of events (%)	651 (12.8)	522 (10.2)	85 (19.9)	38 (10.0)	
Event rate per 100 person-years (95% CI)	7.3 (6.8–7.9)	5.7 (5.2–6.2)	12.1 (9.8–15.0)	5.9 (4.3–8.1)	
HR (95% CI) <sup>a</sup>	0.77 (0.69–0.87)		0.47 (0.32–0.68)		
Cardiovascular death					0.38
No. of events (%)	547 (10.8)	471 (9.2)	60 (14.0)	54 (14.2)	
Event rate per 100 person-years (95% CI)	5.7 (5.3–6.2)	4.9 (4.4–5.3)	7.6 (5.9–9.8)	7.9 (6.1–10.4)	
HR (95% CI) <sup>a</sup>	0.85 (0.75–0.96)		1.01 (0.70–1.47)		
Myocardial infarction, stroke, or cardiovascular death					0.31
No. of events (%)	710 (14.0)	643 (12.6)	78 (18.2)	72 (18.9)	
Event rate per 100 person-years (95% CI)	7.6 (7.1–8.2)	6.8 (6.3–7.3)	10.2 (8.2–12.8)	11.0 (8.8–13.9)	
HR (95% CI) <sup>a</sup>	0.89 (0.80–0.99)		1.06 (0.77–1.47)		
All-cause death					0.26
No. of events (%)	768 (15.1)	692 (13.5)	87 (20.3)	81 (21.3)	
Event rate per 100 person-years (95% CI)	8.0 (7.5–8.6)	7.1 (6.6–7.7)	11.1 (9.0–13.6)	11.9 (9.5–14.7)	
HR (95% CI) <sup>a</sup>	0.89 (0.80–0.98)		1.06 (0.78–1.44)		
Total HF hospitalizations and cardiovascular death					0.21
No. of events	1590	1264	193	109	
Event rate per 100 person-years (95% CI)	16.7 (15.5–18.0)	13.1 (12.1–14.1)	24.7 (20.1–30.7)	16.1 (12.6–20.8)	
RR (95% CI) <sup>a</sup>	0.78 (0.70–0.87)		0.63 (0.46–0.87)		
KCCQ-TSS					0.78
Change from baseline to 8 months (95% CI) <sup>b</sup>	4.6 (4.1–5.1)	7.0 (6.5–7.6)	3.9 (1.9–5.9)	6.7 (4.7–8.8)	
Placebo-corrected change at 8 months (95% CI) <sup>b</sup>	2.4 (1.7–3.1)		2.8 (0.0–5.7)		
KCCQ-OSS					0.61
Change from baseline to 8 months (95% CI) <sup>b</sup>	4.5 (4.1–5.0)	6.6 (6.1–7.1)	3.9 (2.1–5.6)	6.8 (5.0–8.7)	
Placebo-corrected change at 8 months (95% CI) <sup>b</sup>	2.1 (1.4–2.7)		3.0 (0.4–5.5)		
KCCQ-CSS					0.70
Change from baseline to 8 months (95% CI) <sup>b</sup>	3.9 (3.5–4.4)	6.2 (5.8–6.7)	3.1 (1.3–5.0)	6.1 (4.2–8.0)	
Placebo-corrected change at 8 months (95% CI) <sup>b</sup>	2.3 (1.6–3.0)		2.9 (0.3–5.6)		

CI, confidence interval; HF, heart failure; HR, hazard ratio; RR, rate ratio.

<sup>a</sup>Models were stratified by Type 2 diabetes status and trial and adjusted for a history of HF hospitalization (except in the analysis of all-cause death).

<sup>b</sup>Mixed-effect models for repeated measurements adjusted for baseline value, visit (months 4 and 8), randomized treatment, interaction of treatment and visit, and trial. Cardiovascular death includes undetermined deaths.



trial and adjusted for a history of HF hospitalization (except in the analysis of all-cause death and amputation). The difference between treatment groups in the change in KCCQ scores from baseline to 8 months was analysed using mixed-effect models for repeated measurements, adjusted for baseline value, visit (months 4 and 8), treatment assignment, interaction of treatment and visit, and trial. The least-squares mean differences with 95% CI between treatment groups were reported.

The Wald test was used to test for interaction between the treatment effect of dapagliflozin and PAD status for all efficacy endpoints and for amputation, and the respective models included treatment assignment, PAD status, and their interaction as covariates, in addition to those described above. For the other safety outcomes, the Wald test was used to test for interaction between the treatment effect of dapagliflozin and PAD status in a logistic regression model, which included treatment assignment, PAD status, and their interaction as covariates.

All analyses were conducted using SAS version 9.4 (SAS Institute, Cary, NC, USA) and STATA version 17.0 (College Station, TX, USA).

## Results

Of the 11 007 patients randomized in DAPA-HF and DELIVER, 2 were excluded due to missing history related to PAD. Median follow-up was 22 months (IQR 17–30 months).

### Patient characteristics

A total of 809 patients (7.4%) had a history of PAD at baseline. The prevalence was 7.8% and 7.0% in patients with a LVEF  $\leq$ 40% and  $>$ 40%, respectively. The prevalence in men was 8.6% compared with 5.0% in women and 9.3% in patients with Type 2 diabetes compared to 5.9% in those without.

Patients with PAD were more often men and White and slightly older than patients without PAD (Table 1). They were more likely to have a history of smoking, hypertension, Type 2 diabetes, coronary heart disease, and a prior stroke but less likely to have a history of atrial fibrillation. Patients with PAD also had lower eGFR and body mass index. Although patients with PAD had a longer duration of HF, they had a similar average LVEF and NYHA class distribution, no difference in the rate of prior HF hospitalization, and only marginal differences in KCCQ scores and NT-proBNP levels. Patients with PAD more often had HFrEF compared to patients without PAD.

Regarding pharmacological therapy, patients with PAD were more frequently treated with a statin and antiplatelet therapy but less likely to receive an MRA, than those without PAD. They were also more likely to have a cardiac defibrillator.

### Outcomes according to a history of peripheral artery disease

Patients with PAD had a higher risk of all clinical outcomes, compared to individuals without PAD (Figure 1 and Table 2). After adjustment for prognostic variables, including NT-proBNP, the relative risk in patients with PAD, compared to those without, was attenuated but remained significantly higher for all clinical outcomes, except the composite of total HF hospitalizations and cardiovascular death where the risk was numerically but not significantly higher (Table 2). For example, the unadjusted HR for the primary outcome in patients with PAD, compared to those without, was 1.34 (95% CI 1.16–1.55), and the adjusted HR was 1.23 (1.06–1.43). The corresponding HRs for all-cause mortality were 1.46 (1.25–1.72) and 1.25 (1.06–1.47), respectively.

### Efficacy of dapagliflozin on clinical outcomes according to a history of peripheral artery disease

Dapagliflozin, compared with placebo, reduced the risk of worsening HF or cardiovascular death to the same extent in patients with [HR 0.71 (95% CI 0.54–0.94)] and without [0.80 (0.73–0.88)] PAD, with no interaction between PAD and effect of treatment ( $P_{\text{interaction}} = 0.39$ ) (Table 3 and Figure 2). The effect of dapagliflozin on the primary outcome was consistent in both LVEF groups (LVEF  $\leq$ 40% vs.  $>$ 40%) according to history of PAD (see Supplementary material online, Table S1).

The effect of dapagliflozin was also consistent, regardless of PAD history, for all the other clinical outcomes examined, except for worsening HF and HF hospitalization; dapagliflozin significantly reduced the risk of these outcomes in both patients with and without PAD, but the reduction appeared to be larger in those with PAD, with nominally significant interactions between PAD status and the effect of dapagliflozin on these outcomes (Table 3, Figure 2).

The mean increase in KCCQ scores from baseline to 8 months was greater with dapagliflozin compared with placebo in both patients with and without PAD ( $P_{\text{interaction}} \geq 0.61$ ).

### Absolute risk reduction according to the presence or absence of peripheral artery disease

Because the absolute risk was higher in patients with PAD, the absolute benefit was also greatest in those patients. Assuming a constant treatment effect size in each subgroup, the number of patients needed to treat (NNT) over the trial duration to prevent one participant from experiencing the primary endpoint was 17 (95% CI 13–26) for patients with PAD and 24 (18–36) for patients without PAD.

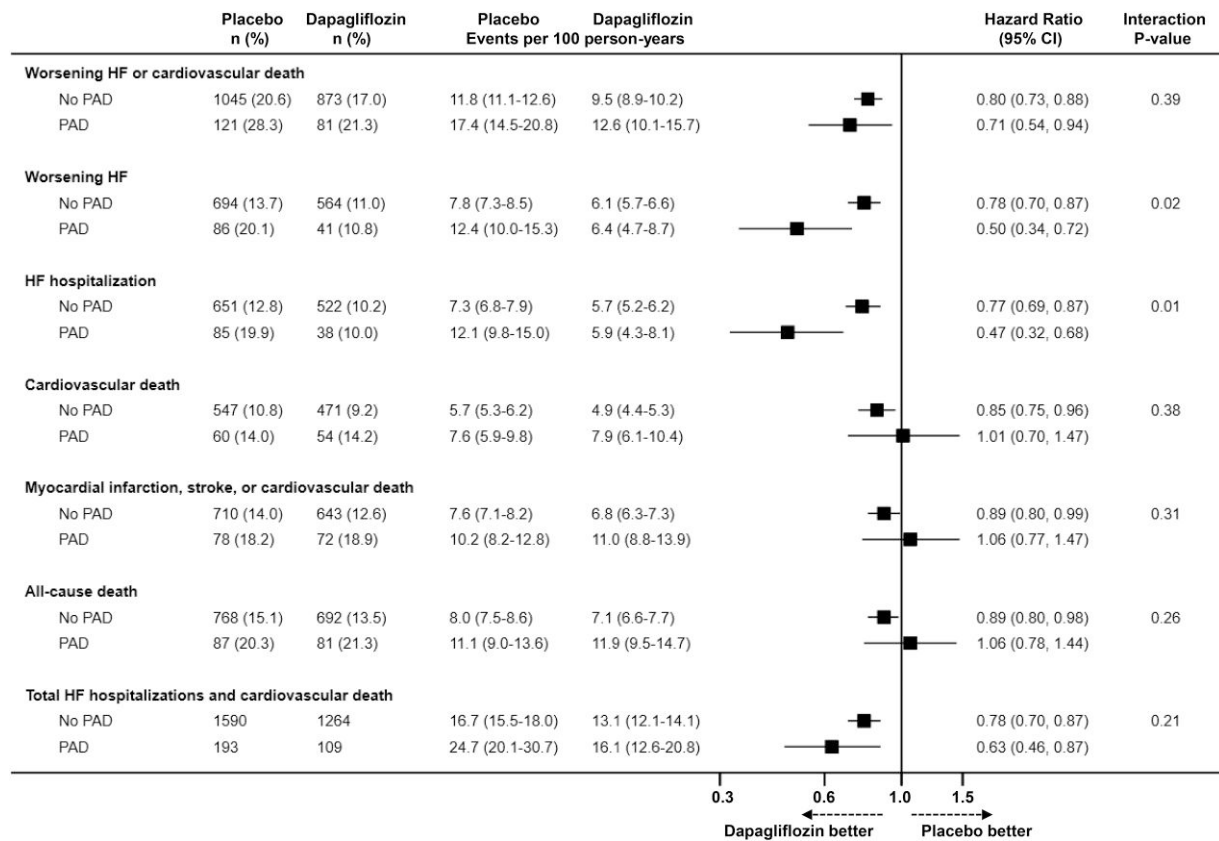
### Safety and tolerability of dapagliflozin on clinical outcomes according to a history of peripheral artery disease

Examination of the placebo groups showed that adverse events were more common among patients with PAD compared to those without. However, there was no difference in the rate of these events between dapagliflozin and placebo among patients with or without PAD (Table 4). In particular, the number and rate of amputations were small and did not differ between treatments in patients with [HR 0.87 (95% CI 0.43–1.75)] or without PAD [0.87 (0.46–1.64)] (Table 5 and Figure 3). Infection rather than ischaemia was the main trigger for amputation, even in patients with PAD (see Supplementary material online, Table S2).

In high-risk subgroups (i.e. those with diuretic use at baseline and Type 2 diabetes), there was also no difference in the risk of amputation between dapagliflozin and placebo among patients with or without PAD (Table 5).

### Sensitivity analysis including patients with a history of amputation

In a sensitivity analysis, the definition of PAD was expanded to include prior surgical amputation. With the expanded definition, 70 patients were reclassified from the no PAD group to the PAD group. Data on outcomes according to a history of PAD are shown in Supplementary material online, Table S3, and data on the effects of dapagliflozin, compared with placebo, on clinical outcomes and adverse



**Figure 2** Effects of dapagliflozin compared with placebo on outcomes in patients with and without a history of peripheral artery disease. This figure shows the effect of dapagliflozin, compared with placebo, on outcomes according to peripheral artery disease status at baseline. The models were stratified according to Type 2 diabetes status and trial and adjusted for treatment assignment and history of heart failure hospitalization (except in the analysis of all-cause death). CI, confidence interval; HF, heart failure; PAD, peripheral artery disease.

**Table 4** Adverse events of dapagliflozin compared with placebo according to a history of PAD

	No PAD n = 10 179		PAD n = 808		P-value for interaction
	Placebo n = 5067	Dapagliflozin n = 5112	Placebo n = 427	Dapagliflozin n = 381	
Discontinuation of study drug for any reason, n (%)	623 (12.3)	629 (12.3)	76 (17.8)	64 (16.8)	0.72
Discontinuation of study drug due to an adverse event, n (%)	256 (5.1)	262 (5.1)	40 (9.4)	32 (8.4)	0.61
Volume depletion <sup>a</sup> , n (%)	178 (3.5)	199 (3.9)	21 (4.9)	28 (7.3)	0.31
Renal adverse event <sup>b</sup> , n (%)	226 (4.5)	202 (4.0)	35 (8.2)	35 (9.2)	0.35
Major hypoglycaemia, n (%)	9 (0.2)	12 (0.2)	2 (0.5)	0 (0.0)	N/A
Diabetic ketoacidosis, n (%)	0 (0.0)	3 (0.1)	0 (0.0)	2 (0.5)	N/A

N/A, not applicable.

A total of 18 randomized patients were excluded from the safety analysis, as these were performed in patients who had undergone randomization and received at least one dose of dapagliflozin or placebo.

<sup>a</sup>Any serious adverse event or adverse event that led to discontinuation of dapagliflozin or placebo that was suggestive of volume depletion in DELIVER.

<sup>b</sup>Any renal serious adverse event or adverse event that led to discontinuation of dapagliflozin or placebo in DELIVER.

**Table 5** Amputations in patients randomized to dapagliflozin or placebo according to a history of PAD, overall and according to diuretic use at baseline and Type 2 diabetes

	No PAD		PAD		P-value for interaction
	Placebo	Dapagliflozin	Placebo	Dapagliflozin	
<b>Full population</b>					1.00
No. of events (%)	20 (0.39)	18 (0.35)	18 (4.22)	14 (3.67)	
Event rate per 100 person-years (95% CI)	0.23 (0.15–0.35)	0.20 (0.12–0.31)	2.62 (1.65–4.16)	2.23 (1.32–3.76)	
HR (95% CI) <sup>a</sup>	0.87 (0.46–1.64)		0.87 (0.43–1.75)		
<b>No diuretics</b>					N/A
No. of events (%)	0 (0)	0 (0)	0 (0)	0 (0)	
Event rate per 100 person-years (95% CI)	N/A	N/A	N/A	N/A	
HR (95% CI) <sup>a</sup>	N/A		N/A		
<b>Diuretics</b>					0.98
No. of events (%)	20 (0.41)	18 (0.37)	18 (4.37)	14 (3.83)	
Event rate per 100 person-years (95% CI)	0.24 (0.15–0.37)	0.20 (0.13–0.32)	2.70 (1.70–4.29)	2.31 (1.37–3.91)	
HR (95% CI) <sup>a</sup>	0.86 (0.46–1.63)		0.86 (0.43–1.73)		
<b>No Type 2 diabetes</b>					0.60
No. of events (%)	3 (0.10)	3 (0.10)	4 (2.13)	2 (1.14)	
Event rate per 100 person-years (95% CI)	0.06 (0.02–0.18)	0.06 (0.02–0.18)	1.28 (0.48–3.42)	0.69 (0.17–2.76)	
HR (95% CI) <sup>a</sup>	0.96 (0.19–4.77)		0.52 (0.09–2.83)		
<b>Type 2 diabetes</b>					0.81
No. of events (%)	17 (0.79)	15 (0.69)	14 (5.86)	12 (5.85)	
Event rate per 100 person-years (95% CI)	0.46 (0.29–0.74)	0.39 (0.23–0.64)	3.73 (2.21–6.29)	3.55 (2.01–6.24)	
HR (95% CI) <sup>a</sup>	0.85 (0.42–1.69)		0.97 (0.45–2.11)		

CI, confidence interval; HR, hazard ratio; N/A, not applicable.

A total of 18 randomized patients were excluded from the safety analysis, as these were performed in patients who had undergone randomization and received at least one dose of dapagliflozin or placebo.

<sup>a</sup>Models were stratified by Type 2 diabetes status (except in the subgroup analysis of patients with and without Type 2 diabetes) and trial.

events, are presented in [Supplementary material online, Tables S4 and S5](#), respectively. These analyses yielded similar findings.

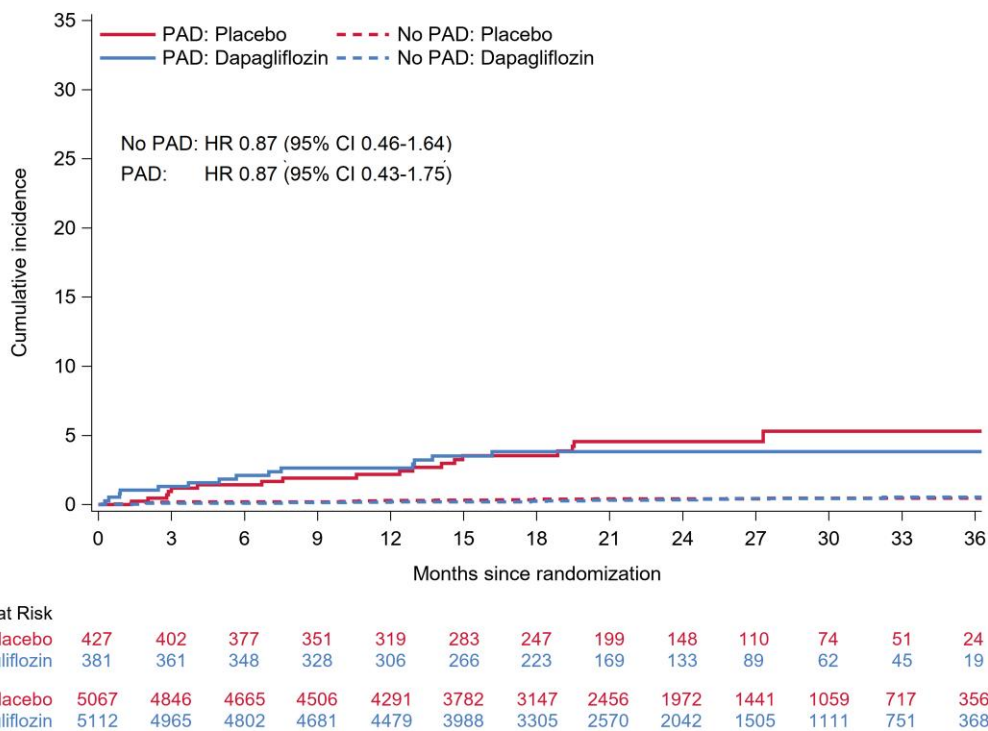
## Discussion

There are three key findings of this *post hoc* analysis of the DAPA-HF and DELIVER trials. First, although relatively uncommon in patients with HF, concomitant PAD was associated with a higher risk of poor clinical outcomes, even after adjustment for known prognostic variables. Second, dapagliflozin had similar beneficial effects on clinical outcomes in patients with and without PAD. This was also the case in our sensitivity analysis which included patients with a history of amputation. Third, while patients with PAD experienced more adverse events, including amputations, the rates of these events were similar between dapagliflozin and placebo-treated patients with and without PAD ([Structured Graphical Abstract](#)).

The prevalence of clinically reported PAD among patients with HF in large registries is typically around 11% to 13%, whereas in prior trials, it ranged from 5% to 16% (e.g. ATMOSPHERE 5.1%, PARAGON-HF 5.4%, PARADIGM-HF 5.9%, HF-ACTION 6.8%, and BEST 16.4%),<sup>19,22,31–37</sup> the variation likely reflecting the proportion of men, smokers, and

geographical regions included.<sup>38,39</sup> There are few reports of the prevalence according to LVEF phenotype, but one large German study documented a prevalence of 10.5% in patients with HFrEF compared to 7.6% in patients with HFpEF.<sup>40</sup> In the two trials described here, we found an overall prevalence of 7.4%, with a prevalence of 7.8% and 7.0% in patients with a LVEF  $\leq$ 40% and  $>$ 40%, respectively, consistent with the aforementioned reports. It should be noted, however, that studies measuring ankle brachial arterial pressure index report a prevalence of PAD two to three times higher, although it is not clear how the haemodynamic derangement in HF affects the interpretation of this index.<sup>38,39,41,42</sup>

Also consistent with prior trials, we found that patients with PAD were more likely to be smokers, have Type 2 diabetes, and have other manifestations of atherosclerotic cardiovascular disease. Interestingly, the overall severity of HF, as reflected by NYHA class, LVEF, NT-proBNP level, history of HF hospitalization, etc., did not differ greatly between patients with and without PAD. However, patients with PAD were at greater risk of worsening HF than those without, although the elevation in risk was not as substantial as that for mortality. We were able to describe a broader range of outcomes than in prior studies and to adjust more comprehensively for other prognostic variables, including NT-proBNP.<sup>21,43</sup> Despite covariate adjustment, PAD remained an independent predictor



**Figure 3** Amputations in patients randomized to dapagliflozin or placebo according to a history of peripheral artery disease. This figure shows the cumulative incidence of amputations according to peripheral artery disease status at baseline. The Cox models were stratified according to Type 2 diabetes status and trial and adjusted for treatment assignment. CI, confidence interval; HF, heart failure; PAD, peripheral artery disease.

of a higher risk of most outcomes examined. Therefore, it was important to show that dapagliflozin was at least as effective in reducing the risk of worsening HF or cardiovascular death in these high-risk patients as it was in participants without PAD. Indeed, because patients with PAD were at higher absolute risk, their absolute benefit was greater, reflected in a smaller NNT (17 in patients with vs. 24 in those without PAD) even when conservatively calculated by applying the overall trial relative risk reduction to each subgroup. Similarly, dapagliflozin was as well tolerated in patients with PAD as in those without, although patients with PAD were more likely to experience adverse events overall (whether on dapagliflozin or placebo). While relatively few patients overall ( $n = 70$ ) had an amputation, the rate was similar to that reported in other trials and substantially more common among patients with PAD (3.96%) than those without (0.37%).<sup>44</sup> However, amputations were not more common with dapagliflozin than with placebo. Indeed, among patients with PAD, there were numerically fewer amputations in the dapagliflozin group. Interestingly, as reported in DECLARE-TIMI 58, infection rather than limb ischaemia was reported as the principal triggering event associated with amputation,<sup>44</sup> emphasizing the importance of foot care in patients with HF and PAD, Type 2 diabetes, or both.

### Study limitations

There are several limitations to this study. Patients enrolled in clinical trials are selected according to specific inclusion and exclusion criteria, and our results may not be generalizable to all patients with HF in the general population, including those with a systolic blood pressure <95 mmHg or an eGFR <30 mL/min/1.73 m<sup>2</sup>. Patients enrolled in trials are also usually better treated than those who are not. Although PAD and amputation were not exclusion criteria, investigators may have under-enrolled patients with

these problems. Some degree of misclassification of PAD status cannot be precluded as PAD was investigator-reported, and no specific instructions as to how to define PAD were provided. Measurement of ankle brachial material pressure index was not required, and the prevalence of PAD reported in studies using this index is much higher than in studies based on a clinical diagnosis. It is also possible that functional limitations due to PAD may have influenced patient answers to the KCCQ. Finally, the large number of endpoints assessed and the *post hoc* nature of the present study may increase the risk of Type 1 errors.

### Conclusions

In this *post hoc* analysis of two Phase 3 clinical trials, the risk of worsening HF or cardiovascular death was higher in HF patients with PAD compared to those without PAD. The benefit of dapagliflozin was consistent in patients with and without PAD, and dapagliflozin was safe and well tolerated in HF patients with PAD.

### Acknowledgements

None.

### Supplementary data

Supplementary data are available at *European Heart Journal* online.

### Pre-registered clinical trial number

The pre-registered clinical trial numbers are NCT03036124 and NCT03619213.



## Ethical approval

The trial protocols were approved by Ethics Committees at all participating institutions, and all patients provided written informed consent.

## Data availability

Trial data will be made available by the sponsor, AstraZeneca, in accordance with their data sharing policy.

## Conflict of interest

J.H.B. reports advisory board honoraria from Bayer; consultant honoraria from Novartis and AstraZeneca; travel grants from AstraZeneca. Dr Kondo has received speaker fees from Abbott, Ono Pharma, Otsuka Pharma, Novartis, AstraZeneca, Bristol-Myers Squibb, Boehringer Ingelheim, and Abiomed. M.Y. reports travel grants from AstraZeneca. P.S.J.'s employer the University of Glasgow has been remunerated by AstraZeneca for working on the DAPA-HF and DELIVER trials, personal fees from Novartis and Cytokinetics, and grants from Boehringer Ingelheim. K.F.D. reports receiving honoraria from AstraZeneca and a research grant to his institution from Boehringer Ingelheim. M.V. has received research grant support, served on advisory boards, or had speaker engagements with American Regent, Amgen, AstraZeneca, Bayer AG, Baxter Healthcare, Boehringer Ingelheim, Chiesi, Cytokinetics, Lexicon Pharmaceuticals, Merck, Novartis, Novo Nordisk, Pharmacosmos, Relypsa, Roche Diagnostics, Sanofi, and Tricog Health, and participates on clinical trial committees for studies sponsored by AstraZeneca, Galmed, Novartis, Bayer AG, Occlutech, and Impulse Dynamics. A.F.H. has received research support from American Regent, AstraZeneca, Boehringer Ingelheim, Merck, Novartis, and Verily and has served as a consultant or on the Advisory Board for Amgen, AstraZeneca, Bayer, Boehringer Ingelheim, Boston Scientific, Bristol Myers Squibb, Cytokinetics, Myokardia, Merck, Novartis, and Vifor. C.S.P.L. is supported by a Clinician Scientist Award from the National Medical Research Council of Singapore; has received research support from AstraZeneca, Bayer, Boston Scientific, and Roche Diagnostics; has served as a consultant or on the advisory board/steering committee/executive committee for Actelion, Amgen, Applied Therapeutics, AstraZeneca, Bayer, Boehringer Ingelheim, Boston Scientific, Cytokinetics, Darma Inc, Us2.ai, Janssen Research & Development, LLC, Medscape, Merck, Novartis, Novo Nordisk, Radcliffe Group Ltd, Roche Diagnostics, Sanofi, and WebMD Global LLC; and serves as the cofounder and non-executive director of Us2.ai. S.E.I. has served on clinical trial committees or as a consultant to AstraZeneca, Boehringer Ingelheim, Novo Nordisk, Lexicon, Merck, Pfizer, vTv Therapeutics, Abbott, and Esperion and has given lectures sponsored by AstraZeneca and Boehringer Ingelheim. F.A.M. has received personal fees from AstraZeneca. R.A.d.B.'s institution, the UMCG, has received research grants and fees (outside the submitted work) from AstraZeneca; Abbott; Boehringer Ingelheim; Cardio Pharmaceuticals GmbH; Ionis Pharmaceuticals, Inc; Novo Nordisk; and Roche. R.A.d.B. has received speaker fees from Abbott, AstraZeneca, Bayer, Novartis, and Roche (outside the submitted work). M.N.K. has received research grant support from AstraZeneca and Boehringer Ingelheim; has served as a consultant or on an advisory board for Amgen, Applied Therapeutics, AstraZeneca, Bayer, Boehringer Ingelheim, Eli Lilly, Esperion Therapeutics, Janssen, Merck (Diabetes and Cardiovascular), Novo Nordisk, Sanofi, and Vifor Pharma, has received other research support from AstraZeneca, and has received honorarium from AstraZeneca, Boehringer Ingelheim, and Novo Nordisk. A.S.D. has received grants and personal fees from AstraZeneca during the conduct of the study; personal fees from Abbott, Biofourmis, Boston Scientific, Boehringer Ingelheim, Corvidia, DalCor Pharma, Relypsa, Regeneron, and Merck; grants and personal fees from Alnylam and Novartis; and personal fees from Amgen,

outside the submitted work. L.K. reports compensation from Novartis for other services, compensation from Novo Nordisk for other services, and compensation from AstraZeneca for other services. P.P. reports compensation from AstraZeneca for consultant services, compensation from Boehringer Ingelheim for consultant services, compensation from Servier for consultant services, compensation from AstraZeneca for other services, compensation from Pfizer for other services, compensation from Amgen for consultant services, compensation from Vifor Pharma for consultant services, compensation from Novartis for other services, and compensation from Abbott Vascular for other services. M.S.S. reports research grant support through Brigham and Women's Hospital from Abbott, Amgen, Anthos Therapeutics, AstraZeneca, Daiichi-Sankyo, Eisai, Intarcia, Ionis, Merck, Novartis, and Pfizer and consulting for Althera, Amgen, Anthos Therapeutics, AstraZeneca, Beren Therapeutics, Boehringer Ingelheim, Reddy's Laboratories, FibroGen, Intarcia, Merck, Moderna, Novo Nordisk, Precision BioSciences, and Silence Therapeutics. S.J.S. has received either personal or institutional research support for DELIVER from AstraZeneca. N.Z. is an employee and shareholder of AstraZeneca. U.W. is an employee and shareholder of AstraZeneca. O.B. is an employee and shareholder of AstraZeneca. S.D.S. has received research grants from Actelion, Alnylam, Amgen, AstraZeneca, Bellerophon, Bayer, Bristol Myers Squibb, Celladon, Cytokinetics, Eidos, Gilead, GlaxoSmithKline, Ionis, Lilly, Mesoblast, MyoKardia, National Institutes of Health/NHLBI, NeuroTronik, Novartis, Novo Nordisk, Respicardia, Sanofi Pasteur, Theracos, and US2.AI and has consulted for Abbott, Action, Akros, Alnylam, Amgen, Arena, AstraZeneca, Bayer, Boehringer Ingelheim, Bristol Myers Squibb, Cardior, Cardurion, Corvia, Cytokinetics, Daiichi-Sankyo, GlaxoSmithKline, Lilly, Merck, Myokardia, Novartis, Roche, Theracos, Quantum Genomics, Cardurion, Janssen, Cardiac Dimensions, Tenaya, Sanofi-Pasteur, Dinaqor, Trembeau, CellProThera, Moderna, American Regent, and Sarepta. J.J.V.M. reports payments through Glasgow University from work on clinical trials, consulting, and other activities from Amgen, AstraZeneca, Bayer, Cardurion, Cytokinetics, GSK, KBP Biosciences, and Novartis. Personal consultancy fees from Alnylam Pharmaceuticals, Bayer, BMS, George Clinical PTY Ltd, Ionis Pharmaceuticals, Novartis, Regeneron Pharmaceuticals, and River 2 Renal Corporation. Personal lecture fees: Abbott, Alkem Metabolics, AstraZeneca, Blue Ocean Scientific Solutions Ltd, Boehringer Ingelheim, Canadian Medical and Surgical Knowledge, Emcure Pharmaceuticals Ltd, Eris Lifesciences, European Academy of CME, Hikma Pharmaceuticals, Imagica health, Intas Pharmaceuticals J.B. Chemicals & Pharmaceuticals Ltd, Lupin Pharmaceuticals, Medscape/Heart.Org, ProAdWise Communications, Radcliffe Cardiology, Sun Pharma, The Corpus, Translation Research Group, and Translational Medicine Academy. He is a director of Global Clinical Trial Partners Ltd.

## Funding

The DAPA-HF and DELIVER trials were funded by AstraZeneca. T.K. receives grants from and the Uehara Memorial Foundation and the Japanese Heart Failure Society Tsuchiya Foundation. J.J.V.M. and P.S.J. are supported by a British Heart Foundation Centre of Research Excellence Grant RE/18/6/34217 and the Vera Melrose Heart Failure Research Fund.

## References

1. Neal B, Perkovic V, Mahaffey KW, de Zeeuw D, Fulcher G, Erondu N, et al. Canagliflozin and cardiovascular and renal events in type 2 diabetes. *N Engl J Med* 2017;**377**:644–657. <https://doi.org/10.1056/NEJMoa1611925>
2. Matthews DR, Li Q, Perkovic V, Mahaffey KW, de Zeeuw D, Fulcher G, et al. Effects of canagliflozin on amputation risk in type 2 diabetes: the CANVAS program. *Diabetologia* 2019;**62**:926–938. <https://doi.org/10.1007/s00125-019-4839-8>
3. Arnett C, Huang Y, Neuen BL, Di Tanna GL, Cannon CP, Oh R, et al. The effect of canagliflozin on amputation risk in the CANVAS program and the CREDENCE trial. *Diabetes Obes Metab* 2020;**22**:1753–1766. <https://doi.org/10.1111/dom.14091>

4. Zinman B, Wanner C, Lachin JM, Fitchett D, Bluhmki E, Hantel S, et al. Empagliflozin, cardiovascular outcomes, and mortality in type 2 diabetes. *N Engl J Med* 2015;**373**: 2117–2128. <https://doi.org/10.1056/NEJMoa1504720>
5. Wiviott SD, Raz I, Bonaca MP, Mosenzono O, Kato ET, Cahn A, et al. Dapagliflozin and cardiovascular outcomes in type 2 diabetes. *N Engl J Med* 2019;**380**:347–357. <https://doi.org/10.1056/NEJMoa1812389>
6. Perkovic V, Jardine MJ, Neal B, Bompoint S, Heerspink HJL, Charytan DM, et al. Canagliflozin and renal outcomes in type 2 diabetes and nephropathy. *N Engl J Med* 2019;**380**:2295–2306. <https://doi.org/10.1056/NEJMoa1811744>
7. McMurray JJV, Solomon SD, Inzucchi SE, Kober L, Kosiborod MN, Martinez FA, et al. Dapagliflozin in patients with heart failure and reduced ejection fraction. *N Engl J Med* 2019;**381**:1995–2008. <https://doi.org/10.1056/NEJMoa1911303>
8. Packer M, Anker SD, Butler J, Filippatos G, Pocock SJ, Carson P, et al. Cardiovascular and renal outcomes with empagliflozin in heart failure. *N Engl J Med* 2020;**383**:1413–1424. <https://doi.org/10.1056/NEJMoa2022190>
9. Solomon SD, McMurray JJV, Claggett B, de Boer RA, DeMets D, Hernandez AF, et al. Dapagliflozin in heart failure with mildly reduced or preserved ejection fraction. *N Engl J Med* 2022;**387**:1089–1098. <https://doi.org/10.1056/NEJMoa2206286>
10. Anker SD, Butler J, Filippatos G, Ferreira JP, Bocchi E, Bohm M, et al. Empagliflozin in heart failure with a preserved ejection fraction. *N Engl J Med* 2021;**385**:1451–1461. <https://doi.org/10.1056/NEJMoa2107038>
11. Heerspink HJL, Stefansson BV, Correa-Rotter R, Chertow GM, Greene T, Hou FF, et al. Dapagliflozin in patients with chronic kidney disease. *N Engl J Med* 2020;**383**: 1436–1446. <https://doi.org/10.1056/NEJMoa2024816>
12. Cannon CP, Pratley R, Dagogo-Jack S, Mancuso J, Huyck S, Masiukiewicz U, et al. Cardiovascular outcomes with ertugliflozin in type 2 diabetes. *N Engl J Med* 2020;**383**:1425–1435. <https://doi.org/10.1056/NEJMoa2004967>
13. Herrington WG, Staplin N, Wanner C, Green JB, Hauske SJ, Emberson JR, et al. Empagliflozin in patients with chronic kidney disease. *N Engl J Med* 2023;**388**: 117–127. <https://doi.org/10.1056/NEJMoa2204233>
14. Paul SK, Bhatt DL, Montvida O. The association of amputations and peripheral artery disease in patients with type 2 diabetes mellitus receiving sodium-glucose cotransporter type-2 inhibitors: real-world study. *Eur Heart J* 2021;**42**:1728–1738. <https://doi.org/10.1093/eurheartj/ehaa956>
15. McDonagh TA, Metra M, Adamo M, Gardner RS, Baumgartner H, Bohm M, et al. 2021 ESC guidelines for the diagnosis and treatment of acute and chronic heart failure. *Eur Heart J* 2021;**42**:3599–3726. <https://doi.org/10.1093/eurheartj/ehab368>
16. Potier L, Roussel R, Velho G, Saulnier PJ, Bumbu A, Matar O, et al. Lower limb events in individuals with type 2 diabetes: evidence for an increased risk associated with diuretic use. *Diabetologia* 2019;**62**:939–947. <https://doi.org/10.1007/s00125-019-4835-z>
17. Alshnbari A, Alkharajji M, Anyanwagu U, Idris I. Diuretics and risk of lower extremity amputation amongst patients with insulin-treated type 2 diabetes—exploring the mechanism of possible sodium glucose co-transporter 2 inhibitor induced risk of lower extremity amputations. *Curr Med Res Opin* 2020;**36**:1985–1989. <https://doi.org/10.1080/03007995.2020.1840340>
18. Potier L, Mohammedi K, Velho G, Roussel R. SGLT2 Inhibitors and lower limb complications: the diuretic-induced hypovolemia hypothesis. *Cardiovasc Diabetol* 2021;**20**:107. <https://doi.org/10.1186/s12933-021-01301-x>
19. Ahmed MI, Aronow WS, Criqui MH, Aban I, Love TE, Eichhorn EJ, et al. Effects of peripheral arterial disease on outcomes in advanced chronic systolic heart failure: a propensity-matched study. *Circ Heart Fail* 2010;**3**:118–124. <https://doi.org/10.1161/CIRCHEARTFAILURE.109.866558>
20. Sandesara PB, Hammadah M, Samman-Tahhan A, Kelli HM, O'Neal WT. Peripheral artery disease and risk of adverse outcomes in heart failure with preserved ejection fraction. *Clin Cardiol* 2017;**40**:692–696. <https://doi.org/10.1002/clc.22716>
21. Wei B, Qian C, Fang Q, Wang Y. The prognostic value of peripheral artery disease in heart failure: insights from a meta-analysis. *Heart Lung Circ* 2016;**25**:1195–1202. <https://doi.org/10.1016/j.hlc.2016.04.002>
22. Jones WS, Clare R, Ellis SJ, Mills JS, Fischman DL, Kraus WE, et al. Effect of peripheral arterial disease on functional and clinical outcomes in patients with heart failure (from HF-ACTION). *Am J Cardiol* 2011;**108**:380–384. <https://doi.org/10.1016/j.amjcard.2011.03.057>
23. Inglis SC, McMurray JJ, Bohm M, Schaufelberger M, van Veldhuisen DJ, Lindberg M, et al. Intermittent claudication as a predictor of outcome in patients with ischaemic systolic heart failure: analysis of the controlled rosuvastatin multinational trial in heart failure trial (CORONA). *Eur J Heart Fail* 2010;**12**:698–705. <https://doi.org/10.1093/eurjhf/hfq070>
24. Ather S, Chan W, Bozkurt B, Aguilar D, Ramasubbu K, Zachariah AA, et al. Impact of noncardiac comorbidities on morbidity and mortality in a predominantly male population with heart failure and preserved versus reduced ejection fraction. *J Am Coll Cardiol* 2012;**59**:998–1005. <https://doi.org/10.1016/j.jacc.2011.11.040>
25. Bhatia RS, Tu JV, Lee DS, Austin PC, Fang J, Haouzi A, et al. Outcome of heart failure with preserved ejection fraction in a population-based study. *N Engl J Med* 2006;**355**: 260–269. <https://doi.org/10.1056/NEJMoa051530>
26. McMurray JJV, DeMets DL, Inzucchi SE, Kober L, Kosiborod MN, Langkilde AM, et al. A trial to evaluate the effect of the sodium-glucose co-transporter 2 inhibitor dapagliflozin on morbidity and mortality in patients with heart failure and reduced left ventricular ejection fraction (DAPA-HF). *Eur J Heart Fail* 2019;**21**:665–675. <https://doi.org/10.1002/ehf.1432>
27. McMurray JJV, DeMets DL, Inzucchi SE, Kober L, Kosiborod MN, Langkilde AM, et al. The dapagliflozin and prevention of adverse-outcomes in heart failure (DAPA-HF) trial: baseline characteristics. *Eur J Heart Fail* 2019;**21**:1402–1411. <https://doi.org/10.1002/ehf.2249>
28. Solomon SD, de Boer RA, DeMets D, Hernandez AF, Inzucchi SE, Kosiborod MN, et al. Dapagliflozin in heart failure with preserved and mildly reduced ejection fraction: rationale and design of the DELIVER trial. *Eur J Heart Fail* 2021;**23**:1217–1225. <https://doi.org/10.1002/ehf.2249>
29. Solomon SD, Vaduganathan M, Claggett BL, de Boer RA, DeMets D, Hernandez AF, et al. Baseline characteristics of patients with HF with mildly reduced and preserved ejection fraction: DELIVER trial. *JACC Heart Fail* 2022;**10**:184–197. <https://doi.org/10.1016/j.jchf.2021.11.006>
30. Lin DY, Wei LJ, Yang I, Ying Z. Semiparametric regression for the mean and rate functions of recurrent events. *J R Stat Soc Series B* 2000;**62**:711–730. <https://doi.org/10.1111/1467-9868.00259>
31. Klein L, Grau-Sepulveda MV, Bonow RO, Hernandez AF, Williams MV, Bhatt DL, et al. Quality of care and outcomes in women hospitalized for heart failure. *Circ Heart Fail* 2011;**4**:589–598. <https://doi.org/10.1161/CIRCHEARTFAILURE.110.960484>
32. Vaduganathan M, Fonarow GC, Greene SJ, DeVore AD, Kavati A, Sirkira S, et al. Contemporary treatment patterns and clinical outcomes of comorbid diabetes Mellitus and HFrEF: the CHAMP-HF registry. *JACC Heart Fail* 2020;**8**:469–480. <https://doi.org/10.1016/j.jchf.2019.12.015>
33. Canepa M, Straburzynska-Migaj E, Drozd J, Fernandez-Vivancos C, Pinilla JMG, Nyolczas N, et al. Characteristics, treatments and 1-year prognosis of hospitalized and ambulatory heart failure patients with chronic obstructive pulmonary disease in the European Society of Cardiology Heart Failure Long-Term Registry. *Eur J Heart Fail* 2018;**20**:100–110. <https://doi.org/10.1002/ehf.964>
34. Balsam P, Ozieranski K, Kaplon-Cieslicka A, Borodzic S, Tyminska A, Peller M, et al. Differences in clinical characteristics and 1-year outcomes of hospitalized patients with heart failure in ESC-HF Pilot and ESC-HF-LT registries. *Pol Arch Intern Med* 2019;**129**:106–116. <https://doi.org/10.20452/pamw.4418>
35. Krum H, McMurray JJ, Abraham WT, Dickstein K, Kober L, Desai AS, et al. The Aliskiren Trial to Minimize OutcomeS in Patients with HEart failure trial (ATMOSPHERE): revised statistical analysis plan and baseline characteristics. *Eur J Heart Fail* 2015;**17**: 1075–1083. <https://doi.org/10.1002/ehf.408>
36. Solomon SD, Rizkala AR, Lefkowitz MP, Shi VC, Gong J, Anavekar N, et al. Baseline characteristics of patients with heart failure and preserved ejection fraction in the PARAGON-HF trial. *Circ Heart Fail* 2018;**11**:e004962. <https://doi.org/10.1161/CIRCHEARTFAILURE.118.004962>
37. McMurray JJ, Packer M, Desai AS, Gong J, Lefkowitz M, Rizkala AR, et al. Baseline characteristics and treatment of patients in prospective comparison of ARNI with ACEI to determine impact on global mortality and morbidity in heart failure trial (PARADIGM-HF). *Eur J Heart Fail* 2014;**16**:817–825. <https://doi.org/10.1002/ehf.115>
38. Keswani AN, White CJ. The impact of peripheral arterial disease on patients with congestive heart failure. *Heart Fail Clin* 2014;**10**:327–338. <https://doi.org/10.1016/j.hfc.2013.10.006>
39. Inglis SC, Hermis A, Shehab S, Newton PJ, Lal S, Davidson PM. Peripheral arterial disease and chronic heart failure: a dangerous mix. *Heart Fail Rev* 2013;**18**:457–464. <https://doi.org/10.1007/s10741-012-9331-1>
40. Edelmann F, Stahrenberg R, Gelbrich G, Durstewitz K, Angermann CE, Dungen HD, et al. Contribution of comorbidities to functional impairment is higher in heart failure with preserved than with reduced ejection fraction. *Clin Res Cardiol* 2011;**100**: 755–764. <https://doi.org/10.1007/s00392-011-0305-4>
41. Adesunloye BA, Valadri R, Mbaezue NM, Onwuanyi AE. Impact of peripheral arterial disease on functional limitation in congestive heart failure: results from the national health and nutrition examination survey (1999–2004). *Cardiol Res Pract* 2012;**2012**: 306852. <https://doi.org/10.1155/2012/306852>
42. Hebert K, Lopez B, Michael C, Franco E, Dias A, Trahan P, et al. The prevalence of peripheral arterial disease in patients with heart failure by race and ethnicity. *Congest Heart Fail* 2010;**16**:118–121. <https://doi.org/10.1111/j.1751-7133.2010.00140.x>
43. Aboyan V, Ricco JB, Bartelink MEL, Bjorck M, Brodmann M, Cohnert T, et al. 2017 ESC guidelines on the diagnosis and treatment of peripheral arterial diseases, in collaboration with the European Society for Vascular Surgery (ESVS): document covering atherosclerotic disease of extracranial carotid and vertebral, mesenteric, renal, upper and lower extremity arteries Endorsed by: the European Stroke Organization (ESO) The task force for the diagnosis and treatment of peripheral arterial diseases of the European Society of Cardiology (ESC) and of the European Society for Vascular Surgery (ESVS). *Eur Heart J* 2018;**39**:763–816. <https://doi.org/10.1093/eurheartj/ehx095>
44. Bonaca MP, Wiviott SD, Zelniker TA, Mosenzono O, Bhatt DL, Leiter LA, et al. Dapagliflozin and cardiac, kidney, and limb outcomes in patients with and without peripheral artery disease in DECLARE-TIMI 58. *Circulation* 2020;**142**:734–747. <https://doi.org/10.1161/CIRCULATIONAHA.119.044775>